

HR Manager 2.11 SP2 Hotfix 2-020 Patch Release Notes

Product Release Information

Product:	BASSnet™ HR Manager 2.11 SP2
Release Number:	HR2.11 SP2 HF2-020
Release Date:	16 October 2023
Customer Support:	For more information or support, please visit our website http://www.bassnet.no/

This release addresses the following issues:

This release note describes the new enhancements and system corrections (as reported by Customers), if any, made in BASSnet HR Manager 2.11 SP2 carried out in the Hotfix 2-020 patch released on 16th October 2023.

Table of Contents

Enhancements (CRs).....	2
1. Personnel & Fleet.....	2
2. Training	2
Fixes.....	3
1. Fleet.....	3
2. Personnel	3
3. Planning.....	3
4. Travel.....	4

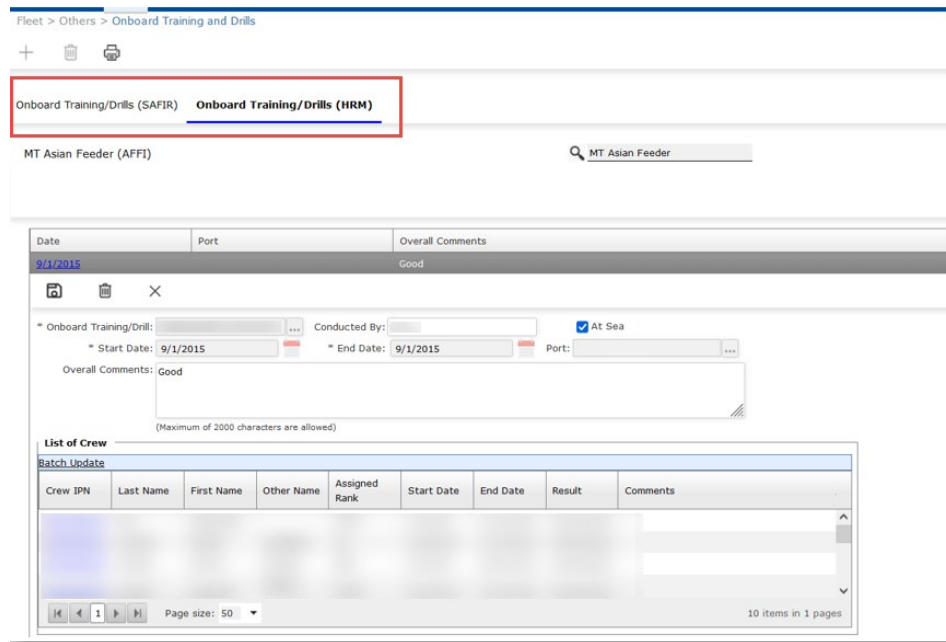
Enhancements (CRs)

1. Personnel & Fleet

- [CR 14889, 14891] A new system configuration ‘CNPNSHOWORHIDEHRM’ is now available where, if enabled (Primary Value = Y), the system will display onboard training & drills records from both SAFIR and HRM on the **Fleet/Personnel – Onboard Training and Drills** screen and in the **Personnel – Profiles** screen – **Onboard Training/Drills** tab.

Furthermore, if the configuration’s Secondary Value = 1, users will be able to create/edit onboard training & drills from HRM, even if the SAFIR license is enabled.

(Previously, if the SAFIR module was enabled, only onboard training & drills records from SAFIR were displayed and users were unable to create/edit records in HRM.)



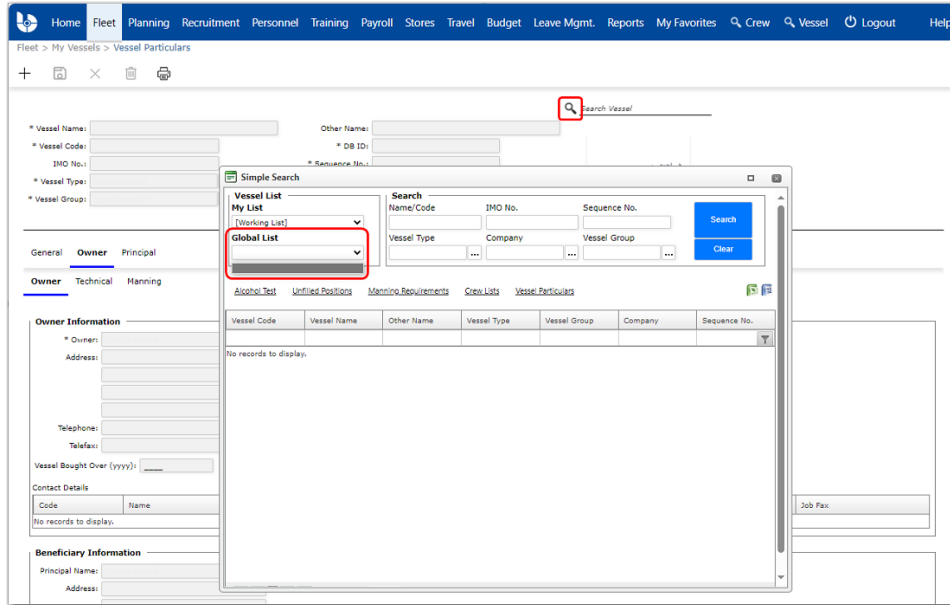
2. Training

- [CR 14886] The Training lookup on the following screens will now show all training records in the register, including training records from Seagull:
 - Manning Requirements
 - Crew Training
 - Training Centers
 - Training Requirements
 - Training Requests
 - Training Planner

Fixes

1. Fleet

- ❑ [79232] Resolved an issue when searching for vessel(s) on the **Vessel Particulars** page where the list of vessels did not display as expected in the **Global List** drop-down.

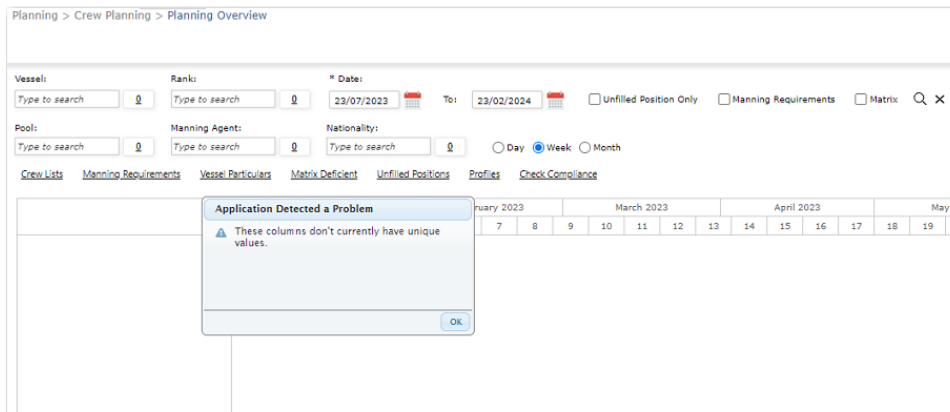


2. Personnel

- ❑ [79181] Resolved an issue where a training/drill was incorrectly assigned to a crew member and appeared in their profile under **Training & Drills** even though they did not participate in the training/drill.

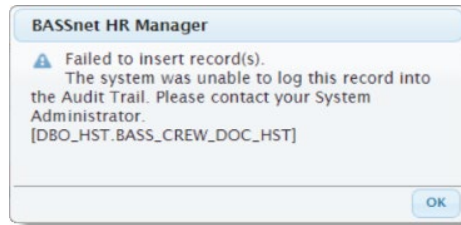
3. Planning

- ❑ [79249] Fixed an error that appeared on the **Planning Overview** screen due to the crew having overlapping **Valid From** and **Valid To** dates on their **Wage** screen. After this fix, crew activity records will be displayed even when there are overlapping dates.



4. Travel

- ❑ [79205] Fixed an error that appeared when sending travel documents to history.



---End of Document---