

## BASSnet 2.11 SP2 Hotfix 2-020 Patch Release Notes

### Product Release Information

<b>Product:</b>	BASSnet™ 2.11 SP2
<b>Release Number:</b>	BN2.11 SP2 HF2-020
<b>Release Date:</b>	16 October 2023
<b>Customer Support:</b>	For more information or support, please visit our website <a href="http://www.bassnet.no/">http://www.bassnet.no/</a>

### This release addresses the following issues:

This release note describes the new enhancements and system corrections (as reported by Customers), if any, made in BASSnet 2.11 SP2 carried out in the Hotfix 2-020 patch released on 16th October 2023.

## Table of Contents

Enhancements (CRs).....	2
1.    Operations.....	2
Fixes.....	4
1.    Home & Administration .....	4
2.    Procurement .....	5
3.    Document Manager .....	7
4.    Operations.....	8

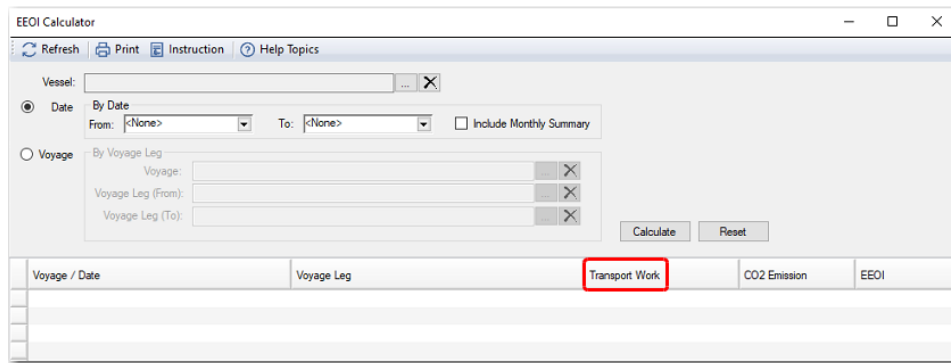
## Enhancements (CRs)

### 1. Operations

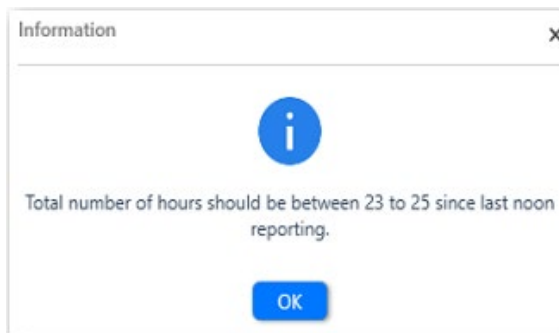
- ❑ [CR 14778] The **EEOI Calculator** has been enhanced to support the calculation of EEOI using the datetime range of last noon (12 PM) to current noon (12 PM) when selecting the **By Date** or **By Voyage** option.

The calculation for **Reports & Statistics** and **Environmental Emission Calculation** will also apply the EEOI noon to noon date format.

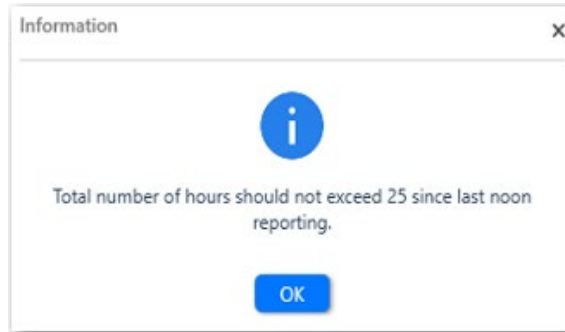
Additionally, a new **Transport Work** column has been added in the EEOI Calculator table while the following columns have been removed: **Total Distance Travelled (NM)**, **Total Cargo (Tons)**, and **Total Cargo (TEU)**.



- ❑ [CR 14768] The **Noon Report** printout has been enhanced to include the following additional information for Lube Oil:
  - Other Lube Oil even when no consumption was reported on the report date
  - Last reported Lube Oil consumed volume (before report date)
  - Last reported Lube Oil consumed date (before report date)
  - Lube Oil remaining on board (ROB) as of the report date
- ❑ [CR 14480] Added two new validation messages in **Ship Log**.
  - For **Noon Report**, if the sum of hours from last noon (12 PM) to current noon (12 PM) added to current noon's total hours does not fall between 23 to 25 hours, then the system will prompt the following message:



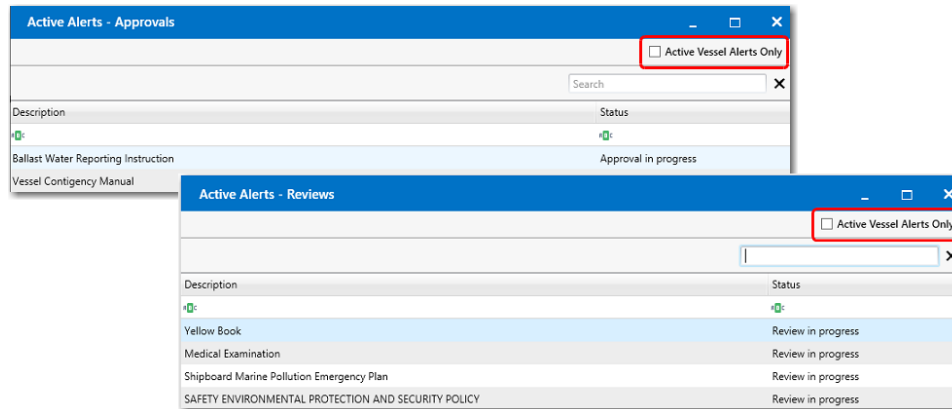
- For events other than **Noon Report** starting after 12 PM to next day's 12 PM, if the sum of hours from previous day's 12 PM to current time added to current record's total hours exceeds 25 hours, then the system will prompt the following message:



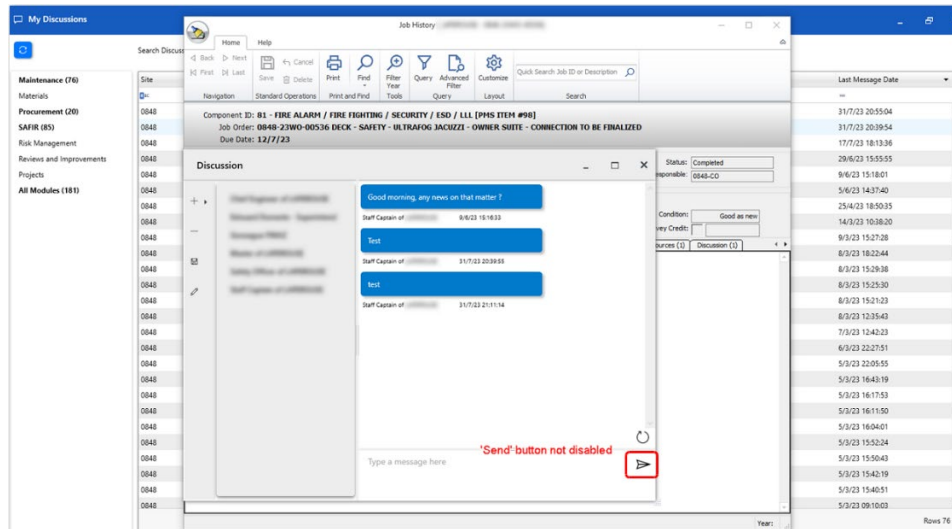
## Fixes

### 1. Home & Administration

- ❑ [78812] Resolved an issue in **My Alerts** where the **Active Vessel Alerts Only** check box was not hidden for **Document Manager Review** and **Approval** alerts even though Document Manager alerts are not allowed to be filtered.

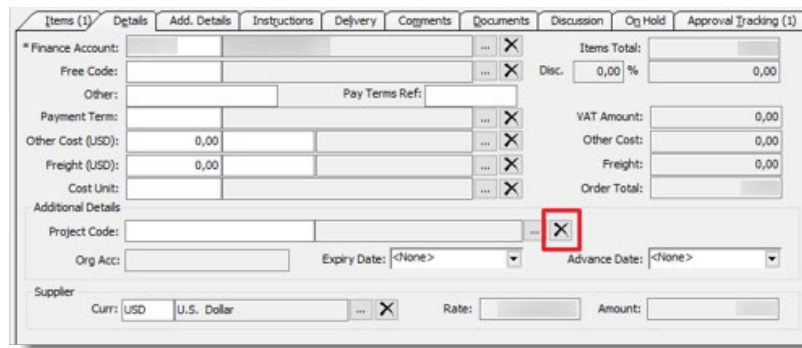


- ❑ [78736] Resolved an issue where the 'send' button was not disabled as expected for discussions that were tied to **Job Order History** and accessed via **My Discussions**.



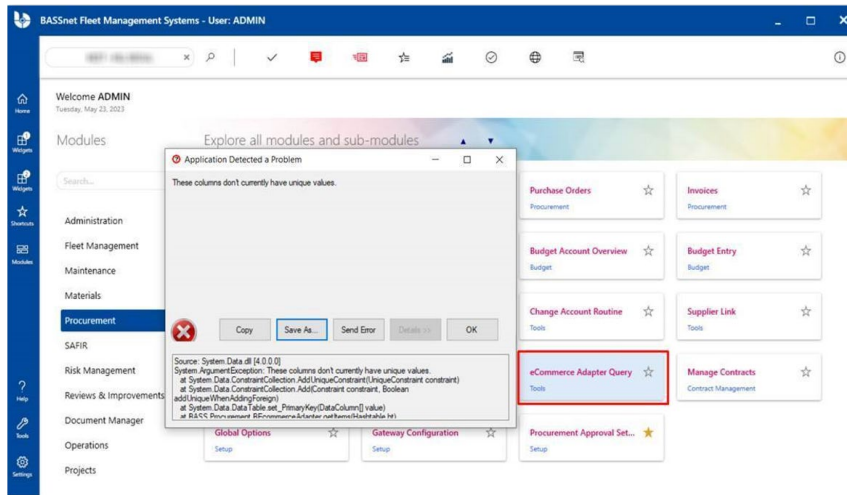
## 2. Procurement

- ❑ [79019] Resolved an issue where the system incorrectly assigned the same POLINE\_NO as the POLINE\_ID in the database for Alternative Proposal items in an imported SupplierLink Excel file.
- ❑ [79110] Resolved an issue on the **Purchase Order** screen where the **WH Qty Received** column was not editable after an invoice was connected to the Purchase Order.
- ❑ [79234] Resolved an issue where users were not able to connect a Project PO to the new project's section/job after changing the Project Code. The system will now remove the SPECCOST\_ITEM\_ID, JOB\_ITEM\_ID, and SPECCOST\_TYPE\_ID in the PO database when users change the Project Code to allow connecting to the new project's Section/Job.
- ❑ [79236] Resolved an issue where the system incorrectly changed the value of SPECCOST\_TYPE\_ID in the PO database table to 1 (instead of null) after the User removed the **Project Code** under the **Details** tab, then clicked the **Remove** button again when the PO was still connected to a project on the section level.



The screenshot shows the 'Details' tab of a Purchase Order screen. The 'Project Codes' field is empty, and the 'Remove' button (an 'X' icon) next to it is highlighted with a red box. Other fields include Finance Account, Free Code, Other, Payment Term, Other Cost (USD), Freight (USD), Cost Unit, Additional Details, Org Acc, Expiry Date, Advance Date, Supplier, Curr, U.S. Dollar, Rate, and Amount.

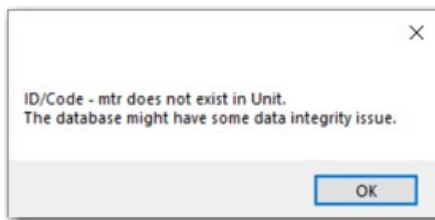
- ❑ [79237] Resolved an issue where the system incorrectly changed the value of SPECCOST\_TYPE\_ID in the PO database table to 0 (instead of null) when the User clicked the **Remove** Project Code button when the PO record was not connected to a project.
- ❑ [79238] Resolved an issue where using **Create As** to create a new project Purchase Order and then changing the vessel and project code caused the Project Code in the PO database table and the Project Section database table to be not synchronized.
- ❑ [79239] Resolved an issue where the filters inserted on the **Requisition – Find** screen were reset after performing requisition approvals.
- ❑ [79240] Resolved an issue where the **Company Address** was missing from the PO report printed from the **Compare Quotes** screen.
- ❑ [79241] Fixed an error that appeared when opening the **eCommerce Adapter Query**. This issue occurred due to duplicate records with the same Message Reference Number in the database.



- ❑ [79250] Resolved an issue on the **Budget Query** screen where the **Actual YTD** and **Estimate YTD** columns are displaying 0 even though POs and Invoices have been created under the budget account.

Budget Code	Company	Base Cur. Code	Vessel	Account	Budget Acc. Desc	Budget Year	Budget YTD	Actual YTD	Estimate YTD	YTD Deviation
				75000-0056				0.00	0.00	0.00
								0.00	0.00	0.00
								0.00	0.00	0.00

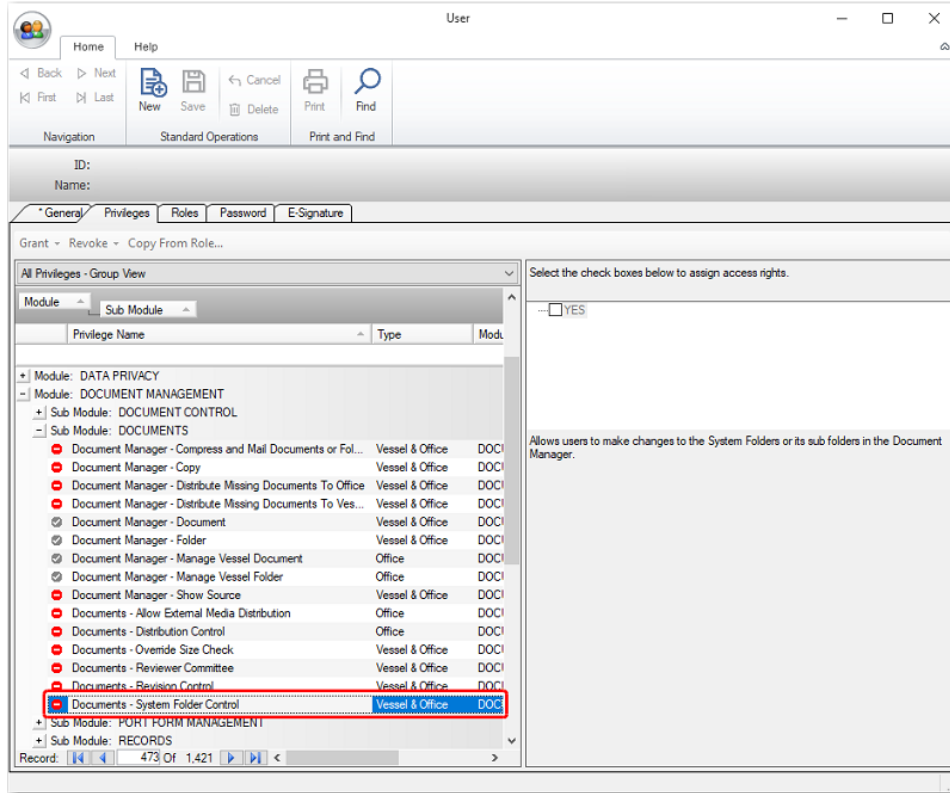
- ❑ [79251] Resolved an issue on the **Compare Quotes** screen that caused certain selected items to be de-selected after clicking **Approve**. This also caused the error below to incorrectly appear when checking the items on the **Supplier Quotation** screen.



- ❑ [79252] Improved system performance when removing Project PO with a large number of tasks from the **Invoice** screen.

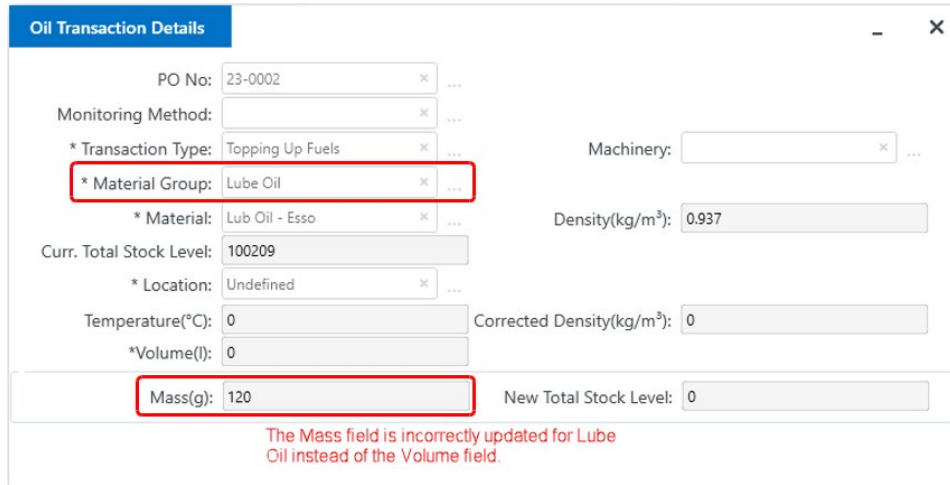
### 3. Document Manager

- ❑ [78949] Resolved an issue where users were still able to create, move, and delete system folders even without the **Documents - System Folder Control** access right.



#### 4. Operations

- ❑ [79010] Resolved an issue where a **Bunkering** event created from a Purchase Order incorrectly updated the **Mass** field instead of the **Volume** field when the **Material Group** is **Lube Oil**.



**Oil Transaction Details**

PO No: 23-0002

Monitoring Method: [ ]

\* Transaction Type: Topping Up Fuels

\* Material Group: **Lube Oil** (highlighted with a red box)

\* Material: Lub Oil - Esso

Machinery: [ ]

Density(kg/m³): 0.937

Curr. Total Stock Level: 100209

\* Location: Undefined

Temperature(°C): 0

Corrected Density(kg/m³): 0

\*Volume(l): 0

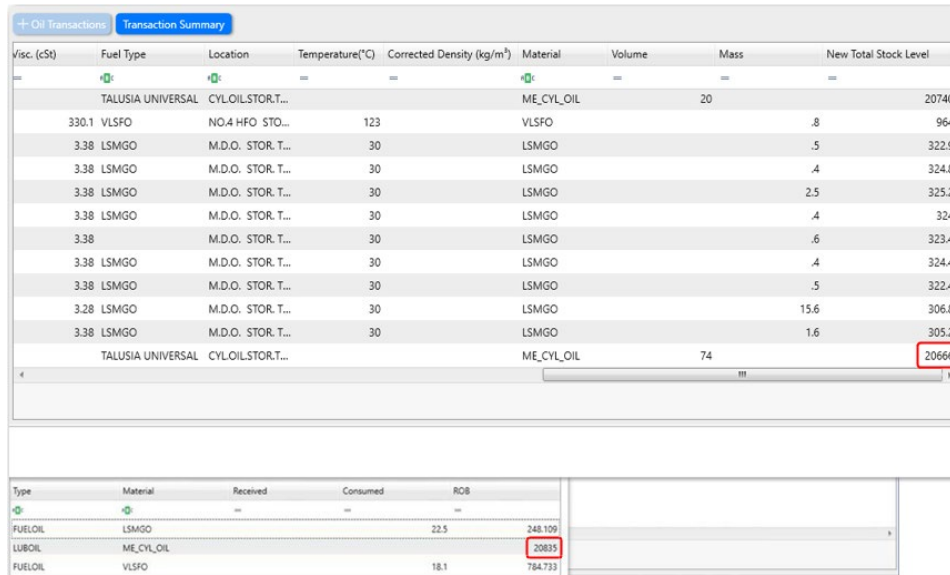
**Mass(g): 120** (highlighted with a red box)

New Total Stock Level: 0

*The Mass field is incorrectly updated for Lube Oil instead of the Volume field.*

- ❑ [78982] Fixed the wrong consumed total shown in the Ship Log's **Oil Transaction Summary** caused by the system incorrectly taking the Mass of all oil types to sum up regardless if the oil type is Fuel Oil or Lube Oil (Lube Oil should sum up the Volume instead of Mass to get the total consumed value).

The wrong consumed value resulted in discrepancies when comparing the Oil Transaction Summary for Lube Oil with Oil Transaction Details.



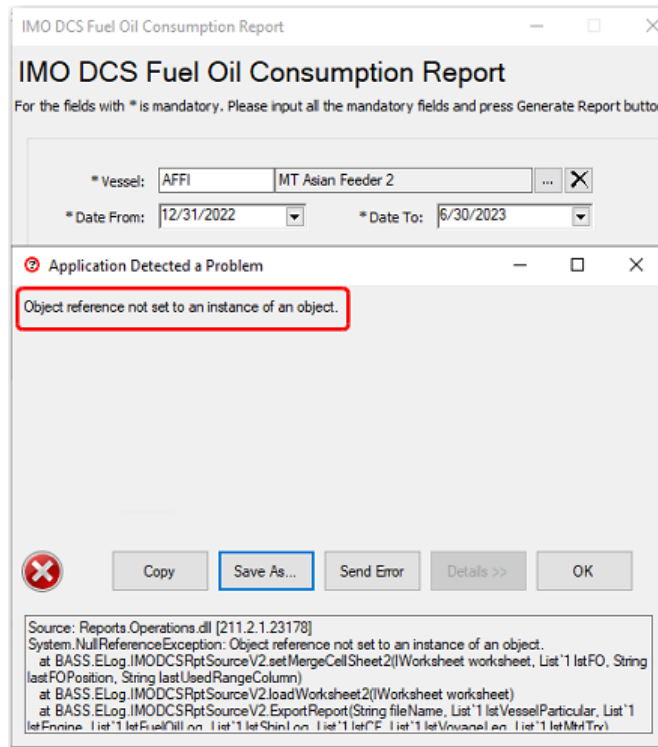
Visc. (cSt)	Fuel Type	Location	Temperature(°C)	Corrected Density (kg/m³)	Material	Volume	Mass	New Total Stock Level
		TALUSIA UNIVERSAL			ME_CYL_OIL		20	20740
330.1	VLSFO	NO.4 HFO STO...	123		VLSFO		.8	964
3.38	LSMGO	M.D.O. STOR. T...	30		LSMGO		.5	322.9
3.38	LSMGO	M.D.O. STOR. T...	30		LSMGO		.4	324.8
3.38	LSMGO	M.D.O. STOR. T...	30		LSMGO		2.5	325.2
3.38	LSMGO	M.D.O. STOR. T...	30		LSMGO		.4	324
3.38		M.D.O. STOR. T...	30		LSMGO		.6	323.4
3.38	LSMGO	M.D.O. STOR. T...	30		LSMGO		.4	324.4
3.38	LSMGO	M.D.O. STOR. T...	30		LSMGO		.5	322.4
3.28	LSMGO	M.D.O. STOR. T...	30		LSMGO		15.6	306.8
3.38	LSMGO	M.D.O. STOR. T...	30		LSMGO		1.6	305.2
		TALUSIA UNIVERSAL			ME_CYL_OIL		74	<b>20666</b> (highlighted with a red box)

Type	Material	Received	Consumed	ROB
FUELOIL	LSMGO		22.5	248.109
LUBOIL	ME_CYL_OIL			<b>20835</b> (highlighted with a red box)
FUELOIL	VLSFO		18.1	784.733



- ❑ [78828] Fixed the following error that was returned when generating the **IMO DCS Fuel Oil Consumption Report**.



---End of Document---