



## BASSnet Financials 3.2 Hotfix 2-000 Patch Release Notes

### Product Release Information

<b>Product:</b>	BASSnet™ Financials 3.2
<b>Release Number:</b>	BF3.2 HF2-000
<b>Release Date:</b>	23 October 2023
<b>Customer Support:</b>	For more information or support, please visit our website <a href="http://www.bassnet.no/">http://www.bassnet.no/</a>

### This release addresses the following issues:

This release note describes the new enhancements and system corrections (as reported by Customers), if any, made in BASSnet Financials 3.2 carried out in the Hotfix 2-000 patch released on 23rd October 2023.

### Table of Contents

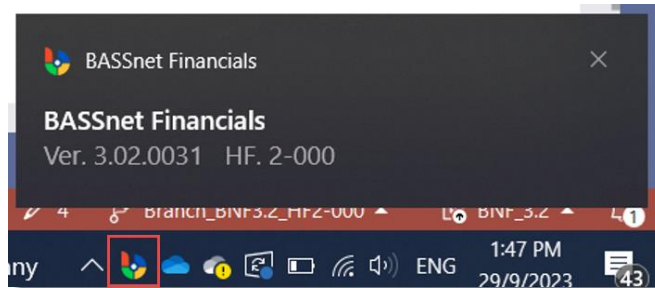
Enhancements .....	2
1. Home .....	2
2. General Ledger .....	2
Fixes .....	2
1. Home & Administration.....	2
2. Accounts Payable.....	3
3. General Ledger .....	5
4. Financial Reporting.....	6

\*Alternatively, use the **Search** function (Ctrl+F) in this document to look for a particular topic or CR/Defect Number.

## Enhancements

### 1. Home

- [CR 14935] A balloon tips pop-up and the BASSnet tray icon will now appear when BASSnet Financials is launched. The popup will be displayed for 3 seconds then disappear automatically.



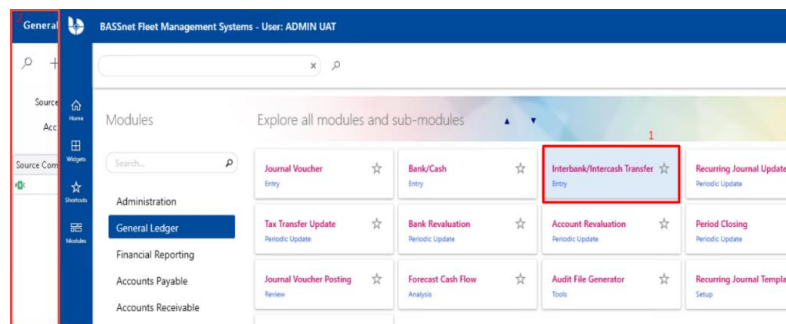
### 2. General Ledger

- [CR 14875] The **Default Posting Variable** field has been added to the list of fields in the **Journal Voucher Printout**. The value displayed is based on the Transaction Type and will appear in the header section of the printout.

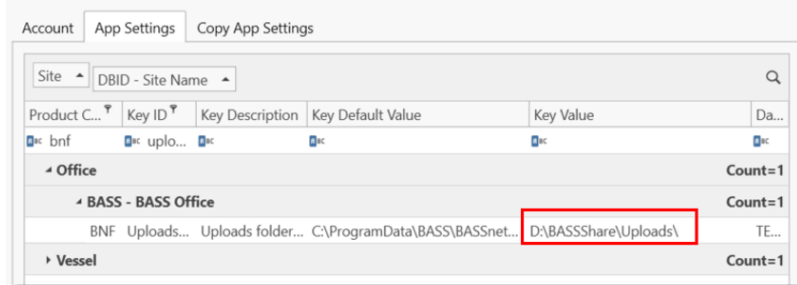
## Fixes

### 1. Home & Administration

- [79069] Resolved an issue where the **Tax Reference Number** was missing in the **AR – Statement of Account** report.
- [78883] Resolved an issue where some screens were launched behind the main BASSnet Financials screen.

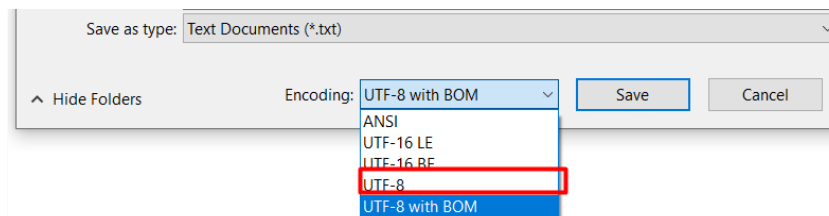


- ❑ [79141] Resolved an issue where users were unable to open attachments due to the Uploads folder path incorrectly containing a backslash (\) (in the **BASSnet Configurations Utilities**).

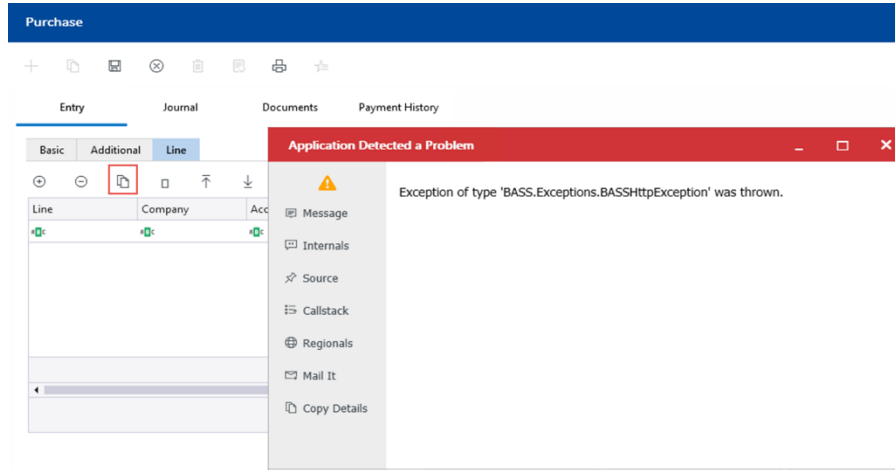


## 2. Accounts Payable

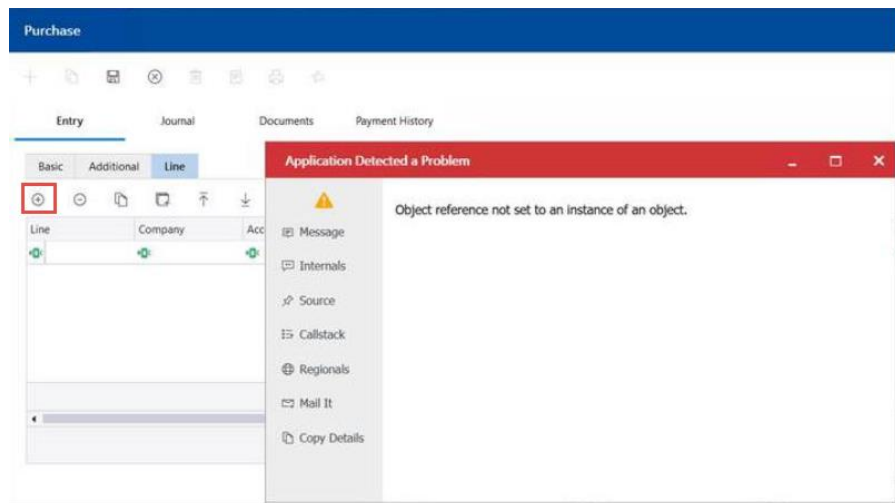
- ❑ [79295] Resolved an issue on the **Payment** screen where the payment line item displayed an intermediary bank code even though the bank code was not set up for the intermediary bank.
- ❑ [79166] Resolved an issue with the **Payment Export** where the system generated a payment file with the *UTF-8 BOM* encoding instead of *UTF-8*.



- ❑ [78881] Resolved an issue where invoice payment line items were incorrectly duplicated in the **Payment Line Item** report.
- ❑ [78861] Fixed an error that appeared on the **Purchase** screen when using the **Copy** function to add line items.



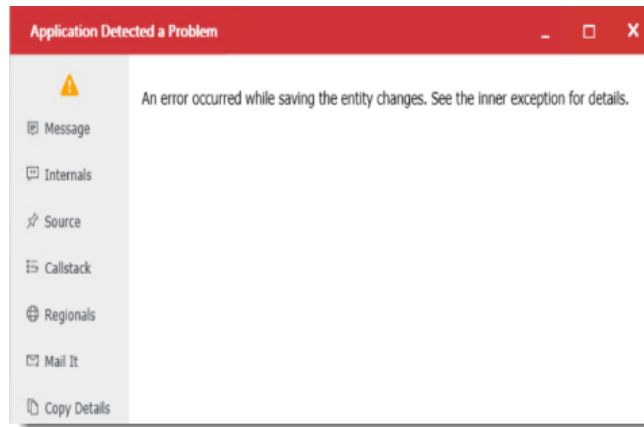
- ❑ [78897] Fixed an error that appeared on the **Purchase** screen when adding line items.



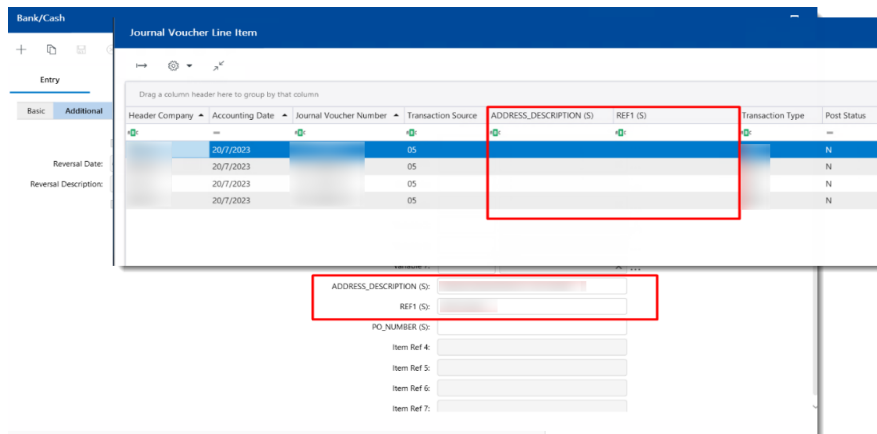
- ❑ [78787] Resolved an error on the **Purchase** screen where the system incorrectly displayed the same **Pay To Location** as the **Order To Location**, even though the supplier was set up with different **Default Pay To** (in the **Address** register).
- ❑ [78859] Resolved an issue on the **Purchase** screen where the **Save** button was not enabled after uploading line items using the **Upload** function.
- ❑ [78860] Resolved an issue on the **Purchase** screen where some account codes were missing in the **Account** lookup screen when using the **Clone** function.

### 3. General Ledger

- ❑ [78851] Resolved an issue where the **Opening Balance** in the **BC Control Account Balance** report was incorrect.
- ❑ [78882] Fixed an error that appeared on the **Bank/Cash** screen when uploading line items with single quotes (') in any of the columns.



- ❑ [79028] Resolved an issue with the **GL Account Balance – Line Item** report where previously, when the **Suppress Net Zero Line Item** check box was selected, the system incorrectly hid line items that were net zero in a future period.
- ❑ [79046] Resolved an issue where the **Item Reference 1** and **2** in a **Bank/Cash** entry was not displayed in the **Journal Voucher Line Item** report.



#### **4. Financial Reporting**

- [79273] Resolved an issue where the system was unable to generate the report when there were multiple worksheets with check boxes in the report template.

---End of Document---