



## BASSnet 2.11 SP3 Hotfix 2-000 Patch Release Notes

### Product Release Information

<b>Product:</b>	BASSnet™ 2.11 SP3
<b>Release Number:</b>	BN2.11 SP3 HF2-000
<b>Release Date:</b>	9 April 2024
<b>Customer Support:</b>	For more information or support, please visit our website <a href="http://www.bassnet.no/">http://www.bassnet.no/</a>

### This release addresses the following issues:

This release note describes the new enhancements and system corrections (as reported by Customers), if any, made in BASSnet 2.11 SP3 carried out in the Hotfix 2-000 patch released on 9<sup>th</sup> April 2024.

## Table of Contents

<b>Enhancements (CRs)</b> .....	2
1. Home & Administration .....	2
2. Fleet Management .....	2
3. Maintenance .....	3
4. Materials .....	15
5. Procurement .....	16
6. Document Manager .....	17
7. Operations.....	18
8. Projects.....	18
<b>Fixes</b> .....	23
1. Maintenance .....	23
2. Procurement .....	24
3. Document Manager .....	25
4. Operations.....	26

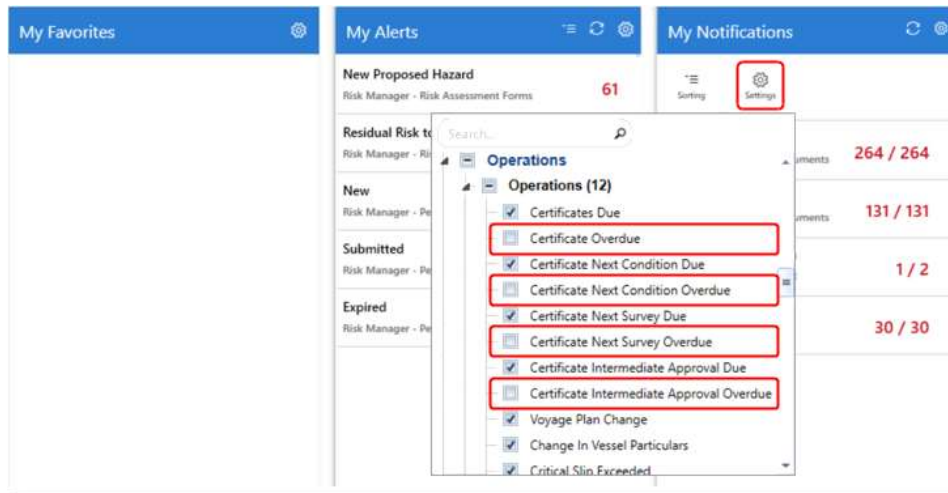
## Enhancements (CRs)

### 1. Home & Administration

- [CR 15055] New 'overdue' certificate notifications have been added in the **My Notifications** widget so that due and overdue certificates are separated and users can differentiate between certificates that are due by a specific date and certificates that have passed the due date.

The four new 'overdue' certificate notifications are:

- **Certificate Overdue**
- **Certificate Next Condition Overdue**
- **Certificate Next Survey Overdue**
- **Certificate Intermediate Approval Overdue**

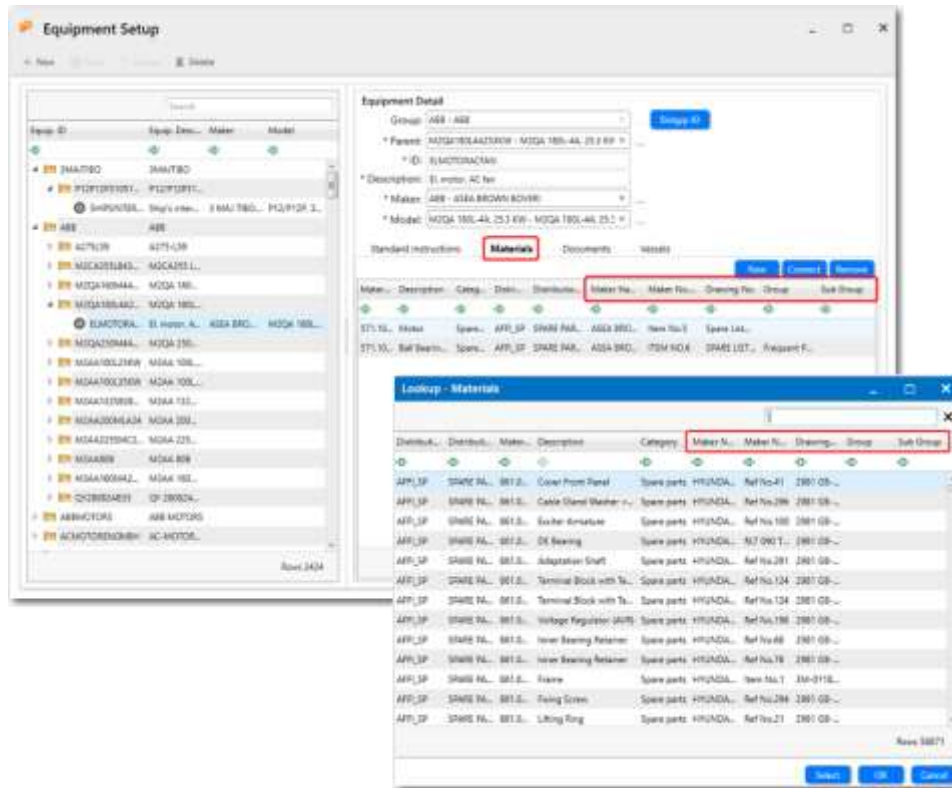


### 2. Fleet Management

- [CR 14684] New columns have been added under the **Materials** tab of the **Equipment Setup** screen and the **Lookup – Materials** screen when users click the **Connect** button.

The five additional columns are:

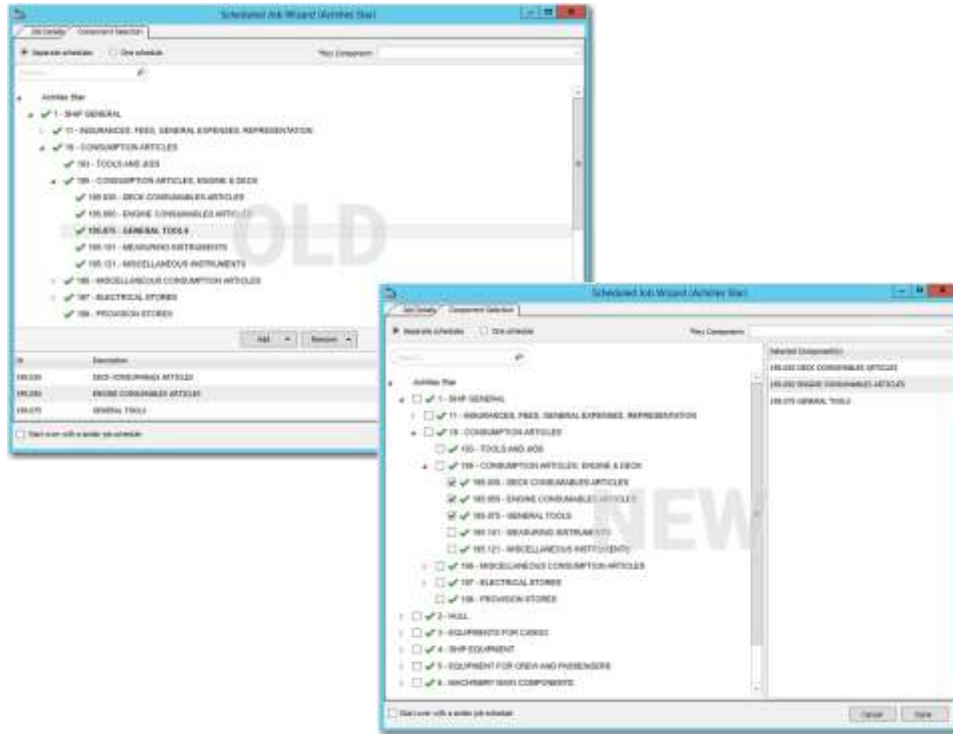
- **Maker Name**
- **Maker No.**
- **Drawing No.**
- **Group**
- **Sub Group**



### 3. Maintenance

- ❑ [CR 14653] The **Component Structure** display under the **Component Selection** tab of the **Scheduled Job** and **Job Order** wizards has been enhanced to increase its user-friendliness, and a Search box has been added to help users find component(s) more easily.

The previous top-bottom display of components has been changed to left-right display to accommodate more components whereby when users select the component check box on the left, the selected component will automatically appear in the **Selected Component(s)** pane on the right, allowing users to view all the selected components without having to scroll.



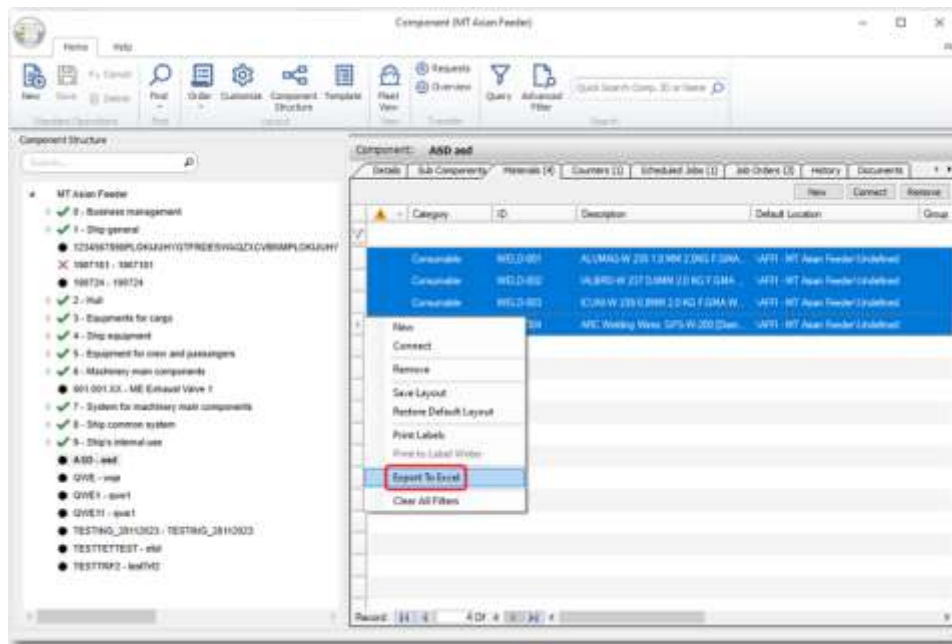
This enhancement has been implemented in the following screens where users are required to connect to components via the Component Structure:

Module	Sub Module	Sub Module Screen	
Maintenance	Main Component	▪ Scheduled Jobs Tab	
		▪ Job Orders Tab	
	Sub Component	▪ Scheduled Jobs Tab	
		▪ Job Orders Tab	
	Scheduled Jobs	Component Tab	
		'New' Button	▪ Main Component ▪ Sub Component
Job Order	Component Tab		
	'New' Button	▪ Main Component ▪ Sub Component	
Counters	Connected To		
	'New' Button	Connection to Components	
Materials	Spare Parts	Components Tab	
		New	▪ Spare Parts ▪ Consumable ▪ Provision ▪ Service ▪ Tool

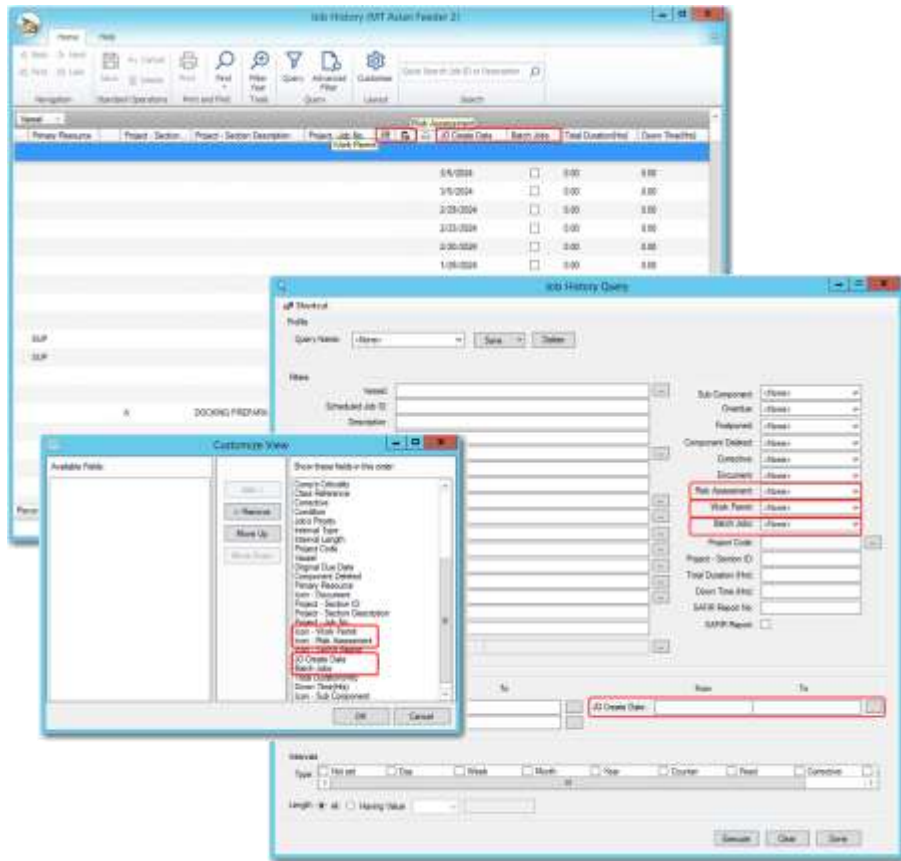
		<ul style="list-style-type: none"> <li>▪ Free Item</li> <li>▪ Bonded Stores</li> </ul>
Consumables	Components Tab	
	New	<ul style="list-style-type: none"> <li>▪ Spare Parts</li> <li>▪ Consumable</li> <li>▪ Provision</li> <li>▪ Service</li> <li>▪ Tool</li> <li>▪ Free Item</li> <li>▪ Bonded Stores</li> </ul>
Provisions	Components Tab	
	New	<ul style="list-style-type: none"> <li>▪ Spare Parts</li> <li>▪ Consumable</li> <li>▪ Provision</li> <li>▪ Service</li> <li>▪ Tool</li> <li>▪ Free Item</li> <li>▪ Bonded Stores</li> </ul>
Bonded Stores	Components Tab	
	New	<ul style="list-style-type: none"> <li>▪ Spare Parts</li> <li>▪ Consumable</li> <li>▪ Provision</li> <li>▪ Service</li> <li>▪ Tool</li> <li>▪ Free Item</li> <li>▪ Bonded Stores</li> </ul>
Services	Components Tab	
	New	<ul style="list-style-type: none"> <li>▪ Spare Parts</li> <li>▪ Consumable</li> <li>▪ Provision</li> <li>▪ Service</li> <li>▪ Tool</li> <li>▪ Free Item</li> <li>▪ Bonded Stores</li> </ul>
Tools	Components Tab	
	New	<ul style="list-style-type: none"> <li>▪ Spare Parts</li> <li>▪ Consumable</li> <li>▪ Provision</li> <li>▪ Service</li> <li>▪ Tool</li> <li>▪ Free Item</li> <li>▪ Bonded Stores</li> </ul>
Free Items	Components Tab	

		New	<ul style="list-style-type: none"> <li>▪ Spare Parts</li> <li>▪ Consumable</li> <li>▪ Provision</li> <li>▪ Service</li> <li>▪ Tool</li> <li>▪ Free Item</li> <li>▪ Bonded Stores</li> </ul>
	Location Manager	Components Tab	
		New	<ul style="list-style-type: none"> <li>▪ New Location</li> <li>▪ New Storage</li> </ul>
Projects	Manage Projects	Jobs	

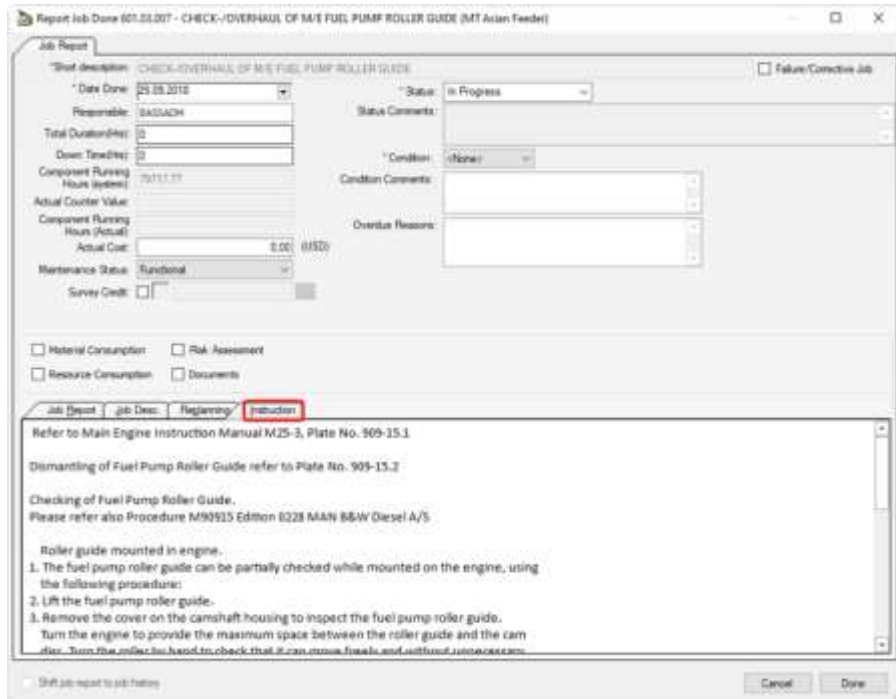
- ❑ [CR 14407] The **Export To Excel** option has been added to the **Main / Sub Component** screen under the **Materials** tab, enabling users to open and view the components list in Excel.



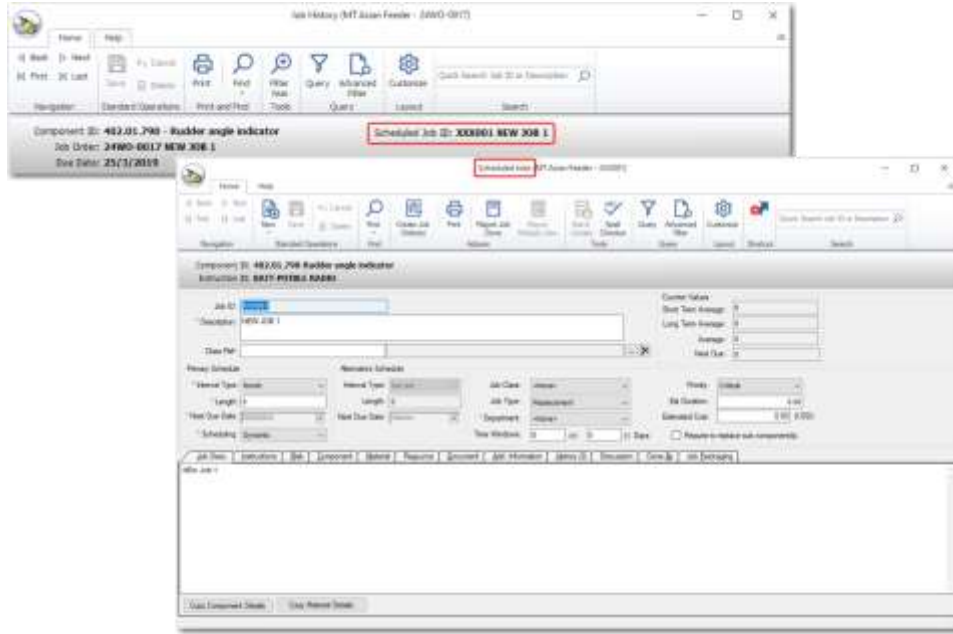
- ❑ [CR 14678] The following columns have been added on the **Find, Query, and Customize View** screens in the **Job History** sub module:
  - **Risk Assessment**
  - **Work Permit**
  - **JO Create Date**
  - **Batch Jobs**



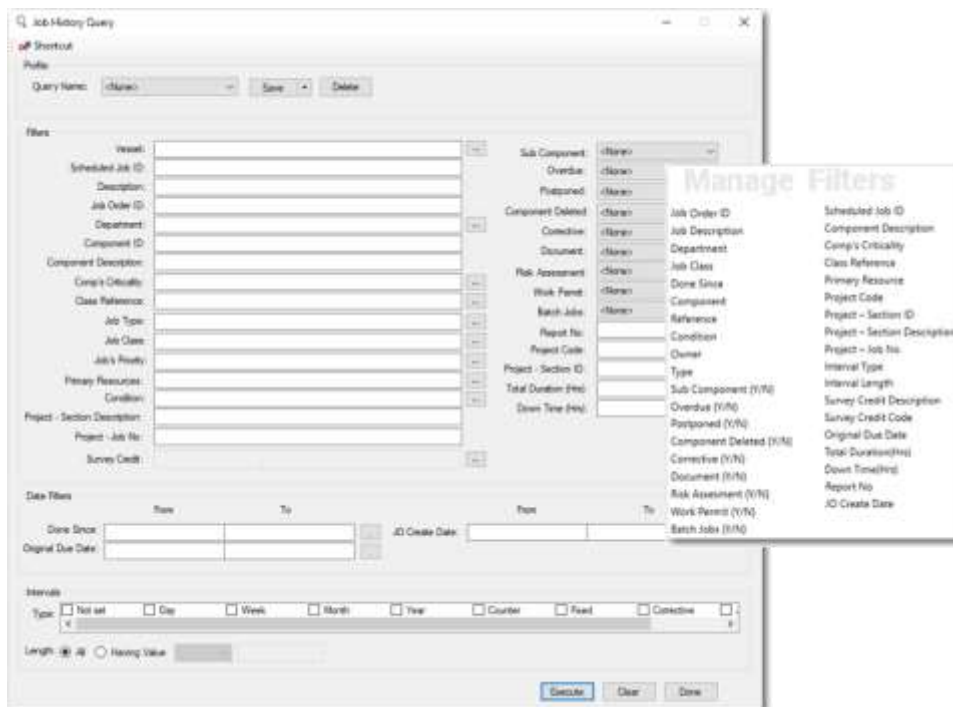
- [CR 14704] The **Report Job Done** screen will now include the **Instruction** tab if a Standard Instruction is connected to the Job Order.



- [CR 14660] The new **Scheduled Job ID** field has been added in the header section of the **Job Orders** and **Job History** screen. Clicking the Scheduled Job ID will open the **Scheduled Jobs** screen. However, if the Job Order / Job History is not linked to any Scheduled Jobs, then the Scheduled Job ID will be empty.

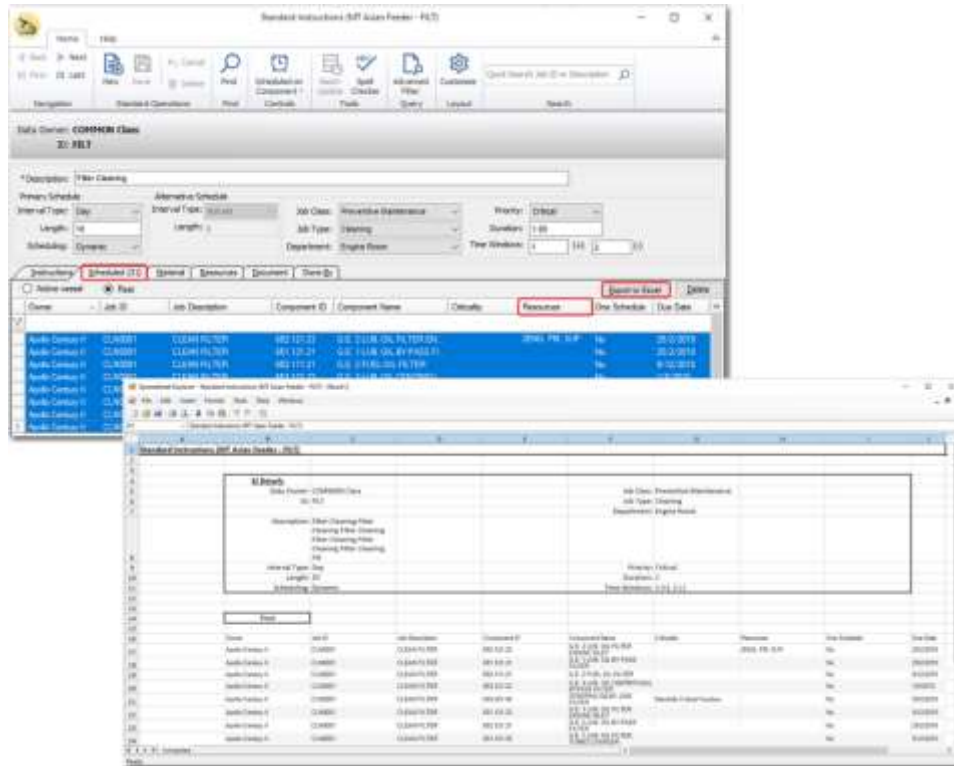


Additionally, the Job History **Query** and **Manage Filters** screens have been enhanced with additional fields to support querying and filtering.



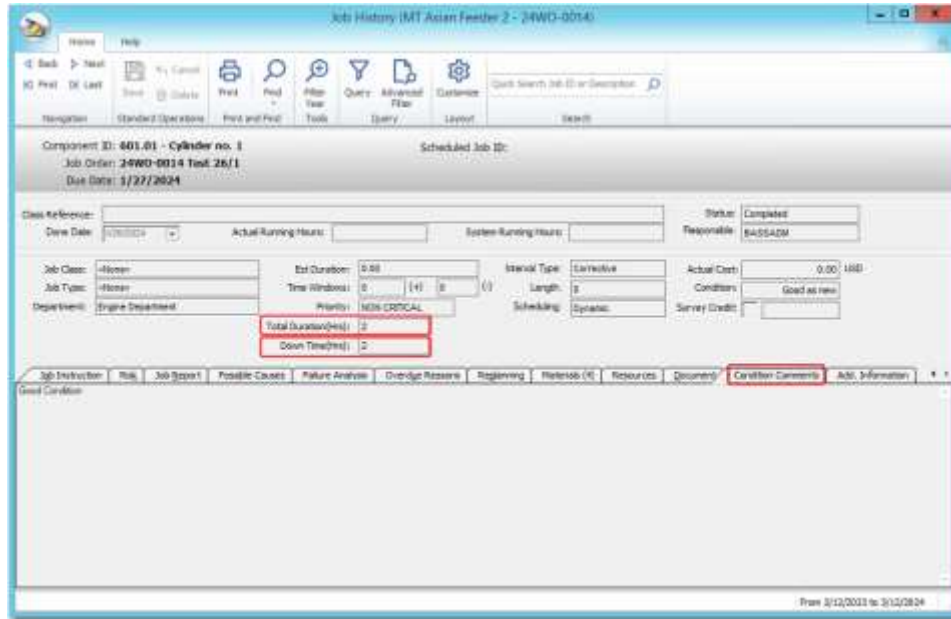


- ❑ [CR 14795] Under the **Scheduled** tab of the **Standard Instructions** screen, a new **Resources** column has been added for Active Vessel and Fleet to display the personnel(s) responsible for the Scheduled Job. A new **Export to Excel** button has also been added under the tab, enabling users to highlight selected Scheduled Job records and export them to Excel.

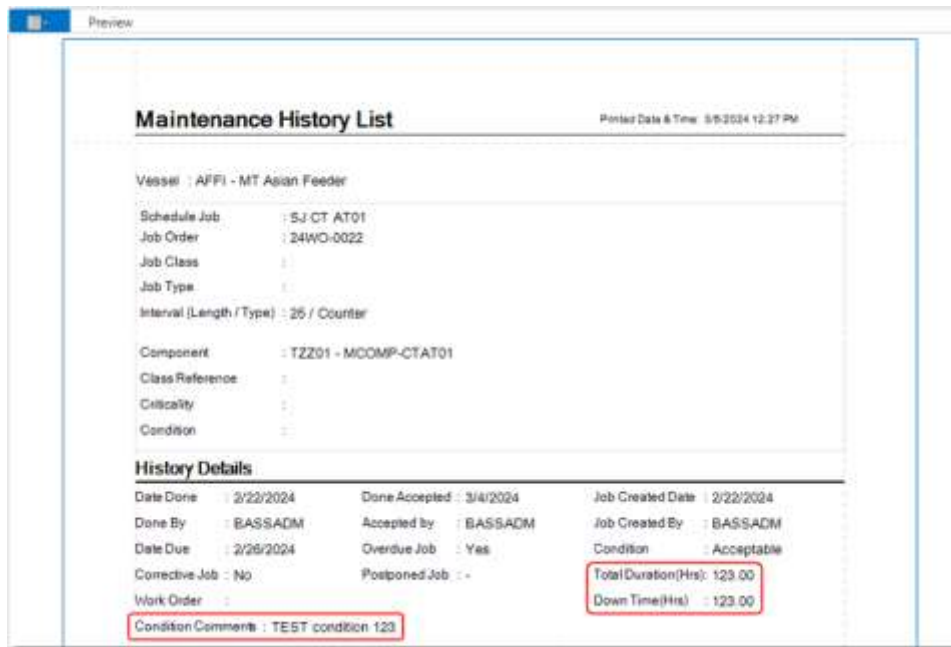


- ❑ [CR 14616] The **Job History** screen has been enhanced with two new fields: **Total Duration (Hrs)** and **Down Time (Hrs)**. A new **Condition Comments** tab has also been added to the screen.

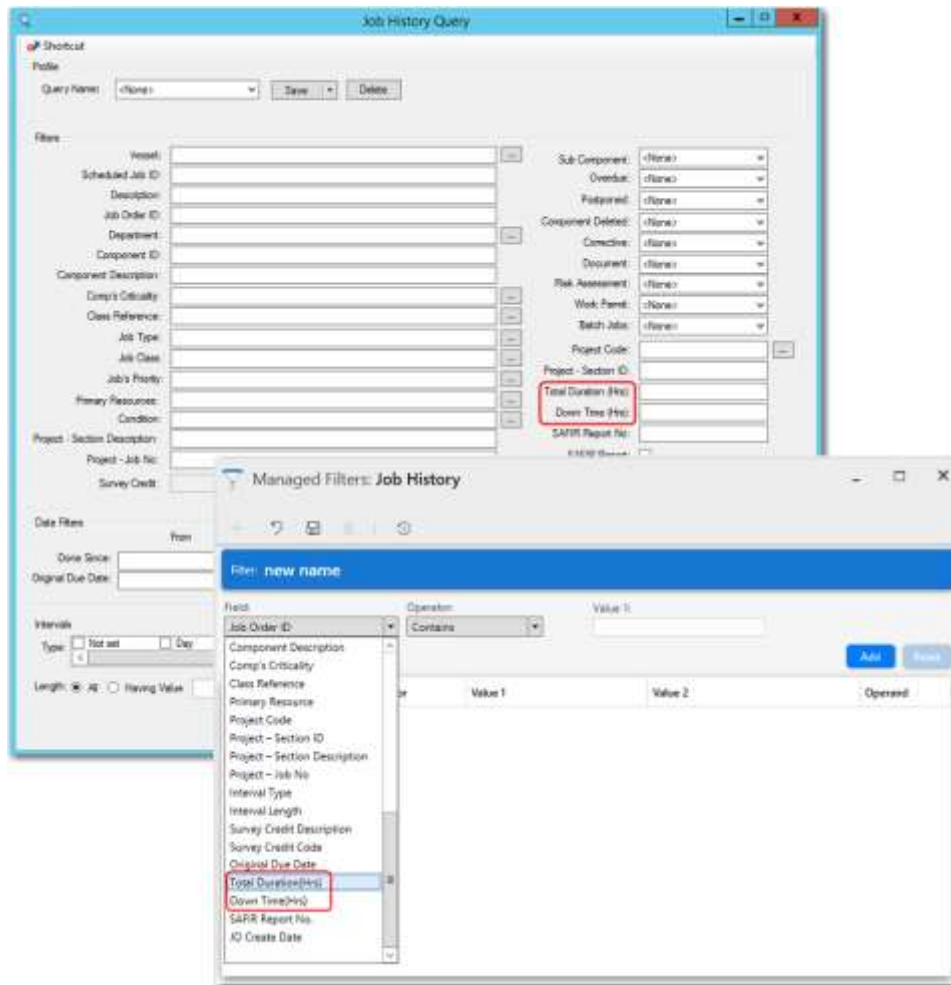
The information stored for these two new fields and tab is brought over when users report a job as done from the **Job Order** screen.



The **Total Duration (Hrs)**, **Down Time (Hrs)**, and **Condition Comments** will now also be included in the **Maintenance History List** report.



Additionally, the **Total Duration (Hrs)** and **Down Time (Hrs)** fields have also been added to the **Job History 'Find', Query, Manage Filters, and Customize View** screens.



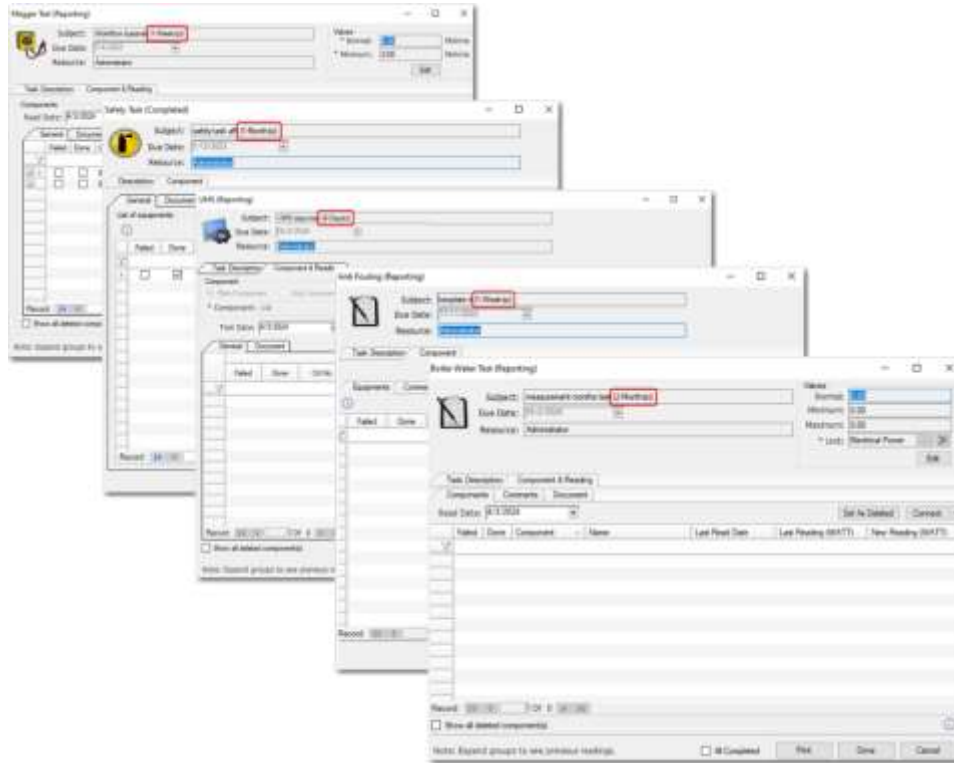
- [CR 14468] On the **Job Orders** and **Job History 'Find'** screens, a new column has been added that contains an icon indicator to indicate Job Orders / Job Histories that are connected to a SAFIR report.



**Note:** The **Job Order** and **Job History Query** screens will also include the **SAFIR Report No.** field and the **SAFIR Report** check box, whereas the **Manage Filters** screens for both Job Order and Job History will include the **SAFIR Report No.** field.

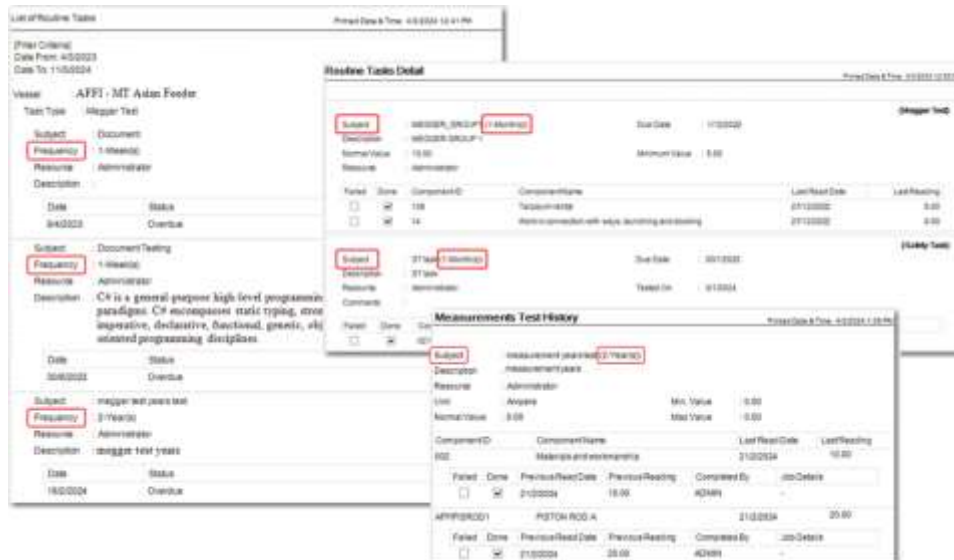
- [CR 15004] A new **Status** column has been added on the **Maintenance Overview** screen for the following job categories to keep track of their statuses:
  - **Due this week**
  - **Overdue Job(s)**
  - **Due this month**
  - **Job History this month**
  - **Corrective Job(s)**
  - **Replanned Jobs Overdue**

- [CR 15120] The interval length of Routine Tasks will now be included in the **Subject** field for the following tasks:
  - **Megger Test**
  - **Safety Task**
  - **UMS**
  - **Result-Type Task**
  - **Measurement-Type Task**



The **Interval Length** will now be included in the following Routine Task reports:

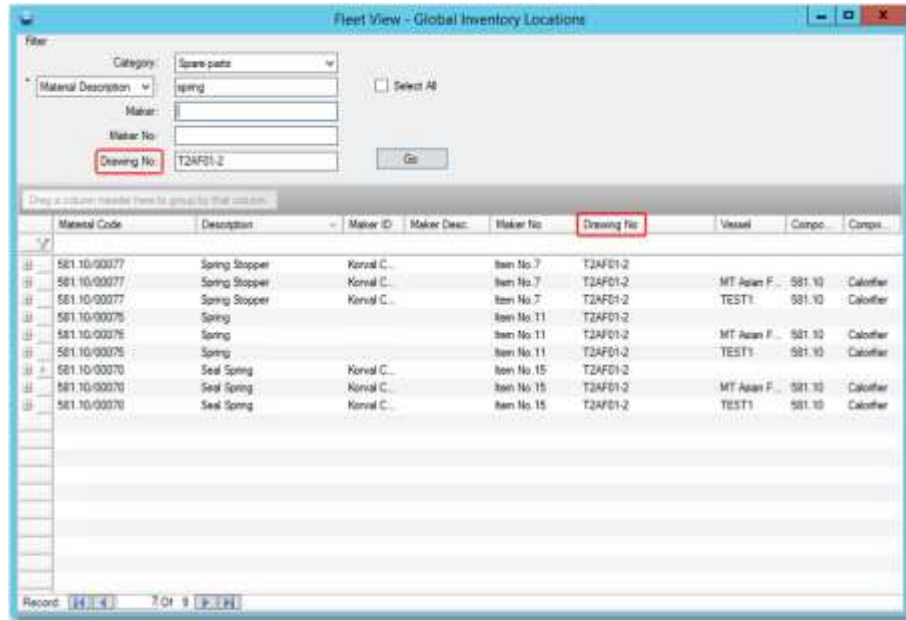
- **List of Routine Tasks:** Frequency field
- **Routine Tasks Detail:** Added to the Subject field
- **Routine Tasks History:** Added to the Subject field





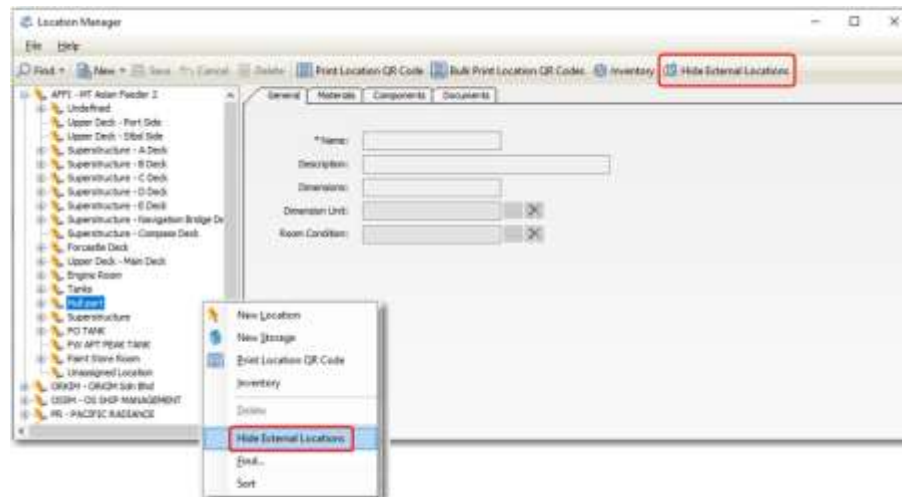
#### 4. Materials

- ❑ [CR 14303] The **Fleet View – Global Inventory Locations** screen has been enhanced with a new **Drawing No.** filter and column so that users can search materials by their drawing number.



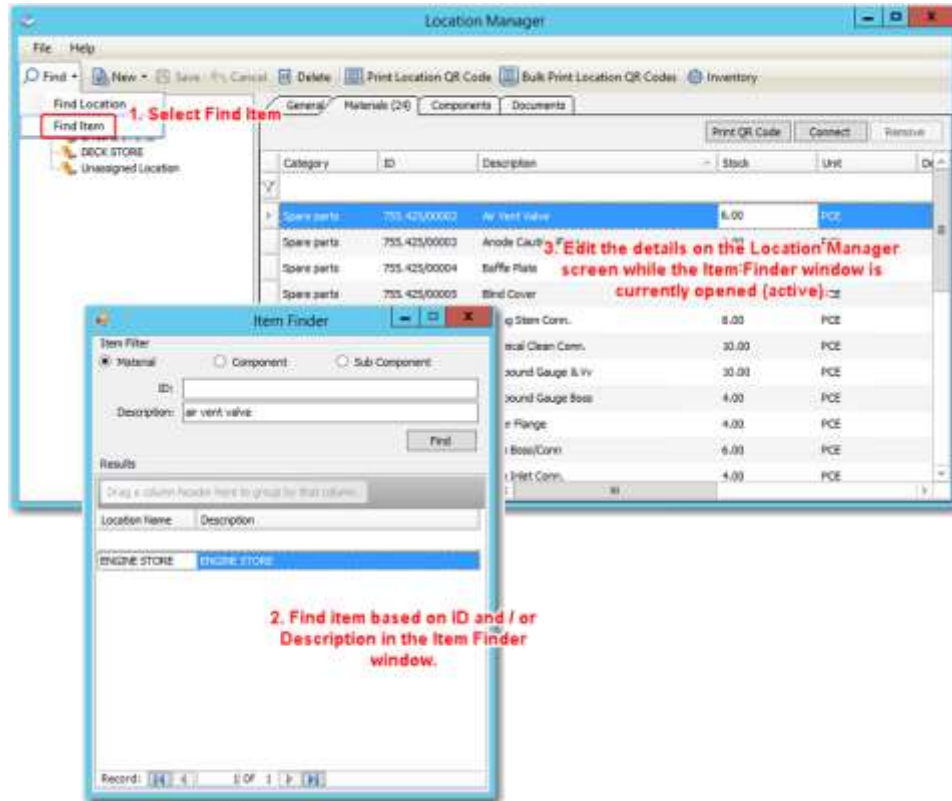
- ❑ [CR 11041] A new **Hide External Location** option has been added on the **Location Manager** screen and when right-clicking the Location tree view for Vessel users only. When the option is selected, external locations will be removed from the location list and only locations related to the Vessel that the user is logged into will be displayed.

With this enhancement, Vessel users can search for locations without having to scroll through a long list that included the irrelevant external locations.



- ❑ [CR 15166] Enhanced **Location Manager** so that when searching for items via **Item Finder**, both the Location Manager screen and the Item Finder window will be active concurrently.

This enhancement will enable users to view and update details on the Location Manager screen without having to close the Item Finder window first, unlike previously when the Location Manager screen is frozen in the background and not editable when the Item Finder window is active.



## 5. Procurement

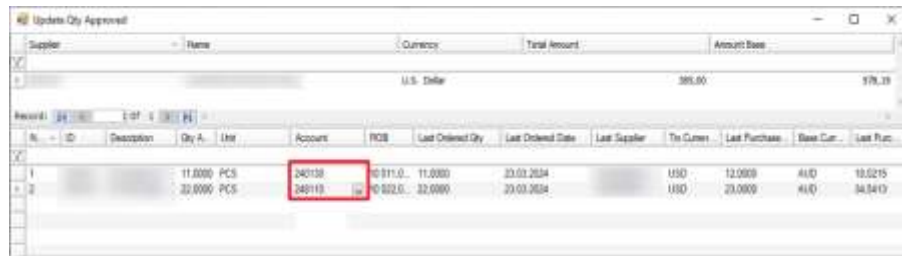
- ❑ [CR 14917] The **Compare Quotes** screen has been enhanced with the new **Update Finance Account** option that is available in the **Budget** drop-down menu.

This enhancement will enable users to update the Requisition account code (header and line respectively) directly from the **Compare Quotes** screen during Quotation Approval, replacing the previous process of navigating to the Requisition screen to perform the update.





In addition, the **Account** column has been added to the **Update Qty Approved** screen to update the account codes for the requisition line items.



No.	ID	Description	Qty A.	Unit	Account	POB	Last Ordered Qty	Last Ordered Date	Last Supplier	Tr. Cur.	Last Purchase	Base Cur.	Last Purc.
1			11,0000	PCS	340130	0311.0.	11,0000	23.03.2024		USD	12,0000	410	10.0215
2			22,0000	PCS	340113	0302.0.	22,0000	23.03.2024		USD	23,0000	410	34.3419

## 6. Document Manager

- ❑ [CR 14924] The System will now generate a hashkey that will be stored in the backend database table whenever users add files/documents in Document Manager and Document Control. The generated hashkey will be used by DocMerge to perform checks to verify if the documents have been successfully replicated from the source to destination.
- ❑ [CR 14602] Currently, when opening a document from Document Manager, the default behavior is that the document will always open in the last visited directory in File Explorer. Therefore, when a user with restricted access to certain drives attempts to open the document and the last visited directory is within the restricted drive, the system will return an error that results in the user not being able to open the document.

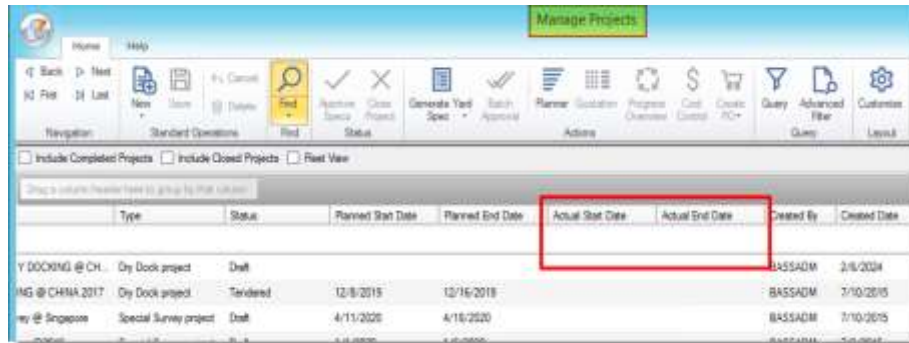
To solve this issue, the mechanism of opening documents has been enhanced with the introduction of a new **DocumentRerouteDir** config key for users to enter the default directory to open document.

- If **there is no value or key found**, the documents will open the last visited directory in File Explorer.
- If **there is a value or key found and the directory exists**, the documents will open in the default directory entered in the config key.



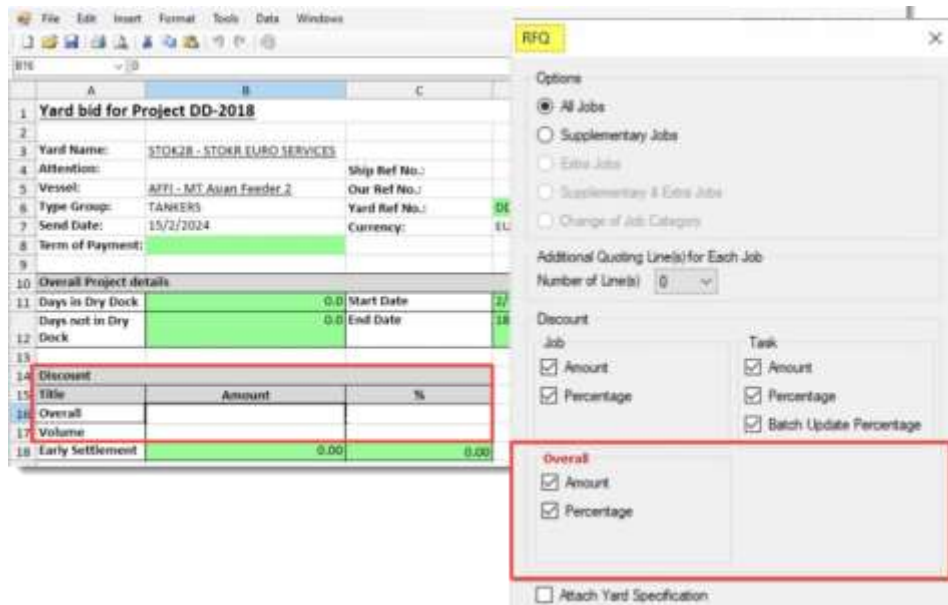
- Project Tender – Tender/Quotation/Contract Award

**Note:** The new columns will also be available in **Manage Filters** and **Query**, wherever available.



Type	Status	Planned Start Date	Planned End Date	Actual Start Date	Actual End Date	Created By	Created Date
Y DOCKING @ CH...	Dry Dock project	Draft				BASSADM	2/6/2024
ING @ CHINA 2017	Dry Dock project	Tendered	12/8/2015	12/16/2015		BASSADM	7/10/2015
ny @ Singapore	Special Survey project	Draft	4/11/2020	4/16/2020		BASSADM	7/10/2015

- [CR 15133] Additional **Overall** Discount options are now available on the **Quotation – RFQ** screen to allow users to select the overall discount by Amount or Percentage that can be applied in the RFQ Excel file that will be sent to the yard for quotation. The selected discounts will enable the respective cells in the Excel File to be edited by the Yard.



Discount	Title	Amount	%
Overall			
Volume			
Early Settlement		0.00	0.00

**RFQ Options:**

- All Jobs
- Supplementary Jobs
- Extra Jobs
- Supplementary & Extra Jobs
- Change of Job Category

Additional Quoting Line(s) for Each Job  
Number of Line(s): 0

**Discount:**

Job	Task
<input checked="" type="checkbox"/> Amount	<input checked="" type="checkbox"/> Amount
<input checked="" type="checkbox"/> Percentage	<input checked="" type="checkbox"/> Percentage
	<input checked="" type="checkbox"/> Batch Update Percentage

**Overall:**

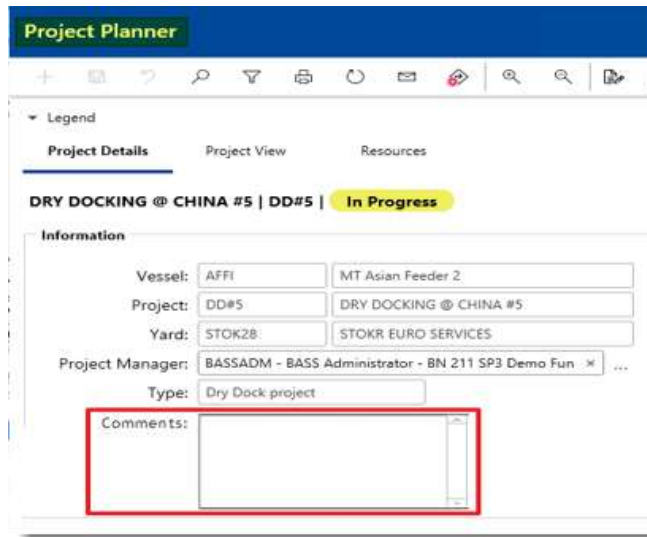
- Amount
- Percentage

Attach Yard Specification

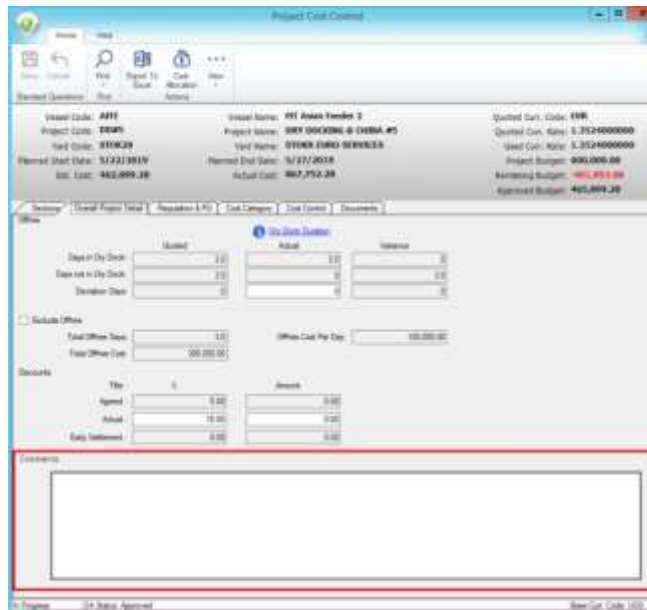
- [CR 15016] A new **Comments** field is now available on the following screens for users to add external text references:
  - in the header section of the **Manage Projects** screen



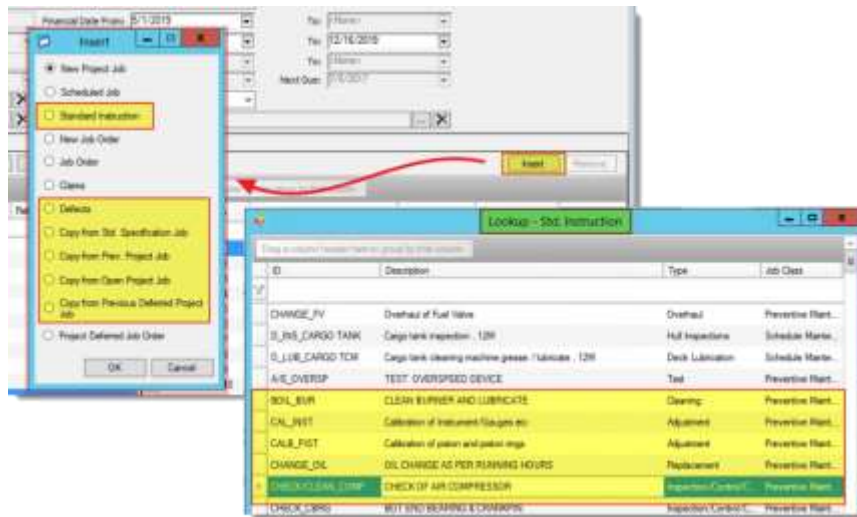
- the **Project Planner** screen – **Project Details** tab



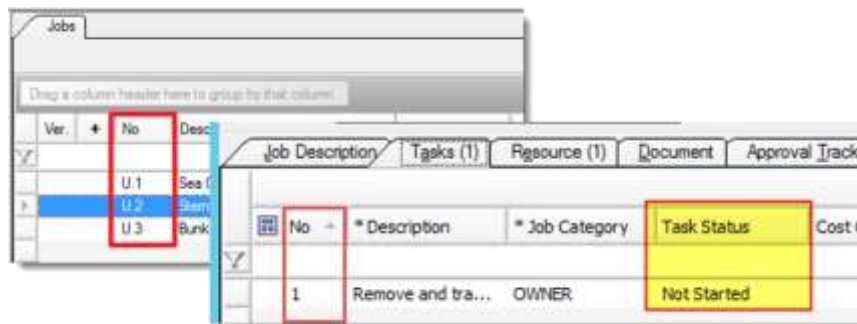
- the **Project Cost Control** screen – **Overall Project Detail** tab.



- ❑ [CR 15094] Multiple items can now be selected in the following lookup screens (accessed via the **Job – Insert** button):
  - Std. Instructions
  - Defects
  - Copy from Std Project Job
  - Copy from Open Project Job
  - Copy from Prev. Project Job
  - Copy from Previous Deferred Project Job



- ❑ [CR 14023] When a Job or Task status is 'Not Started', the sequence number for the job or task can still be changed. After the job specification is approved and project status is 'Tendered', the number assigned to the jobs and tasks can no longer be changed, even if a job/task is deleted.



- ❑ [CR 14611] The **Comments** column on the **Manage Projects** screen – **Jobs** tab can now be double-clicked to open a **Comments** screen. This screen can also be accessed from the **Insert/View Comment** right-click option.



For Job Orders that are linked to a project, a new **Comments** tab is now available on the Job Orders screen to view comments related to the project.



## Fixes

### 1. Maintenance

- [81014] Resolved the following issues when using the **Shift Multiple Jobs to History** function:
  - **Issue 1: Scheduled Jobs with long descriptions**  
When Scheduled Jobs were reported as done with the Job Report filled in, after shifting the Scheduled Jobs to history, the **Job Report** tab on the **Job History** screen became blank or incorrectly displayed the Job Description instead of the Job Report entered.
  - **Issue 2: Job Orders created from Scheduled Jobs**  
Similarly, when Job Orders were created from Scheduled Jobs and then reported as done with the Job Report filled in, after shifting the Job Orders to history, the **Job Report** tab on the **Job History** screen became blank or incorrectly displayed the Job Description instead of the Job Report entered.
  - **Issue 3: Scheduled Jobs that are also Counter-type jobs**  
The **Actual Running Hours** and **System Running Hours** of Counter-type Scheduled Jobs did not display the correct values as entered during Report Job Done after being shifted to history.



## 2. Procurement

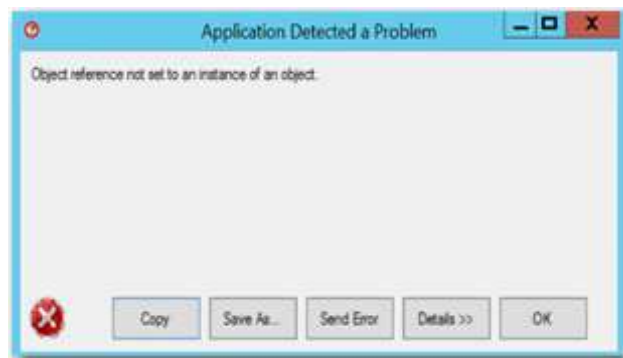
- ❑ [80906] Resolved an issue where previously, after the user cancelled a Final Invoice that was connected to a Purchase Order, the 'user was not able to set another invoice as 'Final Invoice' when connected to the same Purchase Order.



- ❑ [80907] Resolved an issue where column filters inserted in one record were incorrectly carried over to other records when opening from the same window. Column filters were only reset after closing the window and re-opening it again.
- ❑ [80908] Fixed an error that appeared when clicking **Sent to Vessel** on the **Shipment** screen – **Items** tab.

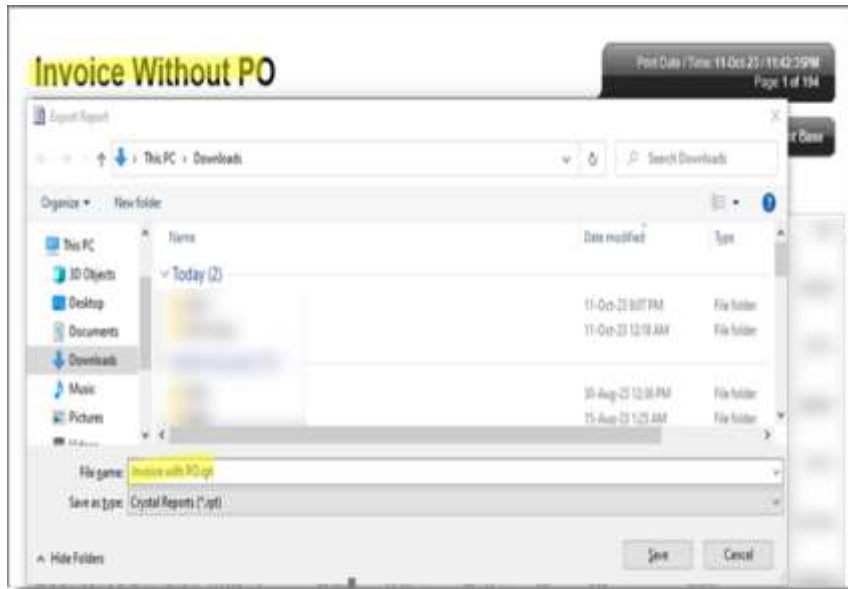


- ❑ [80909] Fixed an error that appeared on the **Requisition** screen when opening the Account lookup screen in a bulk requisition record that was created using an Excel Template with only free items.





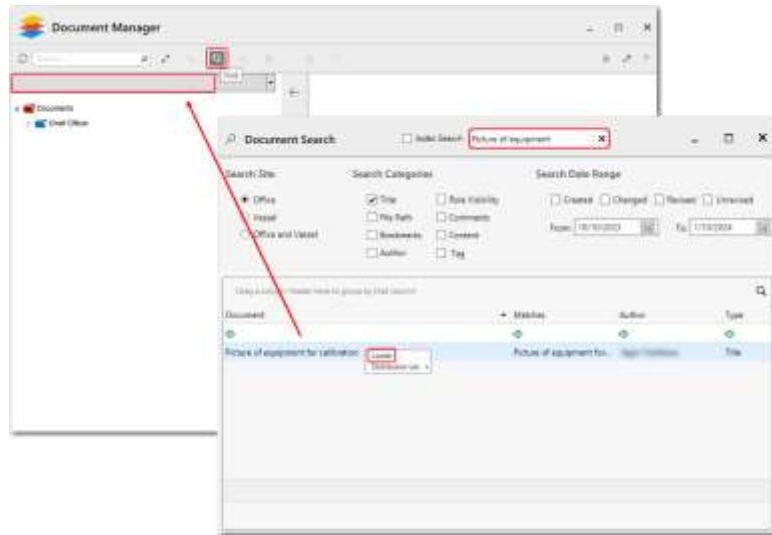
- ❑ [80910] Resolved an issue with the **Purchase Planner** widget where inactive materials were displayed in the **Stock < Min Stock, Stock < Reorder Stock Level** and **Insufficient Qty for Jobs** material lists, and users were able to order the inactive materials.
- ❑ [80915] Resolved an issue where the default file name of the **Invoice Without PO** report was incorrectly displayed as **Invoice with PO** after exporting the report.



- ❑ [80933] Improved system performance when opening the **Supplier Quotation** screen for records with a large number of items and contracted items.

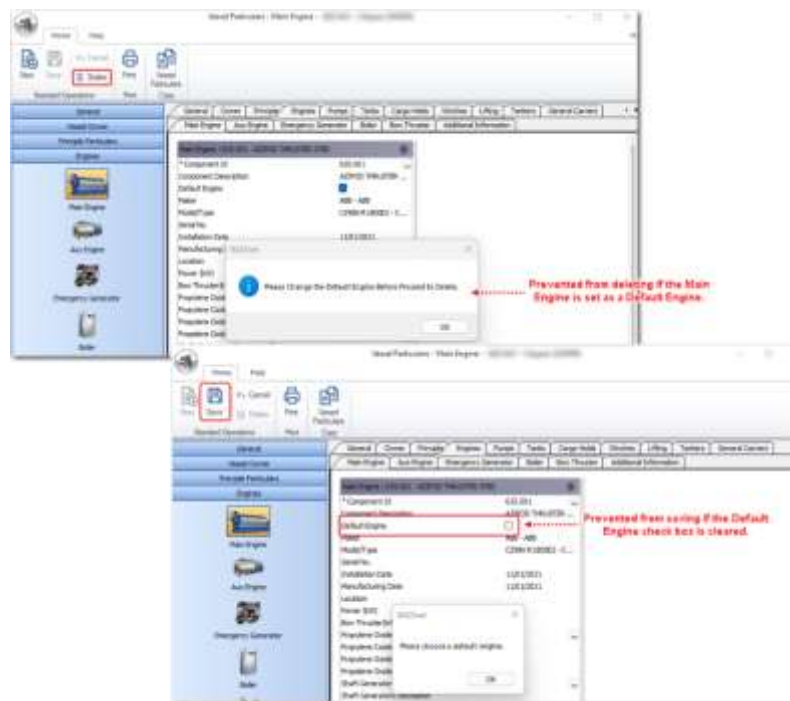
### 3. Document Manager

- ❑ [80695] Resolved an issue where the files and folder structure in the left pane previously showing **Distributed Office Documents** or **Vessel Documents** became blank when a Vessel user searched for a document located at the Office site via the **Locate** function.



#### 4. Operations

- [80787] Resolved an illogical setting in **Vessel Particulars** where users were prevented from deleting an incorrectly added Main Engine or Aux. Engine if the engine was set as the Default Engine and after clearing the **Default Engine** check box, the system then prevented users from saving the Vessel Particulars because no Default Engine was detected.



---End of Document---