

BASSnet 2.11 SP2 Hotfix 2-060 Patch Release Notes

Product Release Information

| | |
|--------------------------|--|
| Product: | BASSnet™ 2.11 SP2 |
| Release Number: | BN2.11 SP2 HF2-060 |
| Release Date: | 14 June 2024 |
| Customer Support: | For more information or support, please visit our website http://www.bassnet.no/ |

This release addresses the following issues:

This release note describes the new enhancements and system corrections (as reported by Customers), if any, made in BASSnet 2.11 SP2 carried out in the Hotfix 2-060 patch released on 14th June 2024.

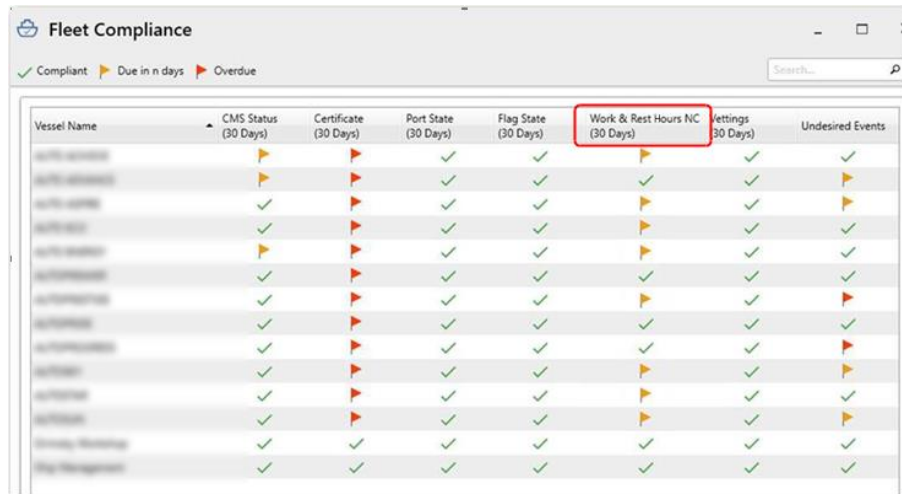
Table of Contents

| | |
|--------------------------|----------|
| Fixes | 2 |
| 1. Home & Admin | 2 |
| 2. Maintenance..... | 3 |
| 3. Procurement..... | 4 |
| 4. SAFIR..... | 8 |
| 5. Document Manager..... | 9 |
| 6. Operations | 10 |
| 7. Projects | 10 |

Fixes

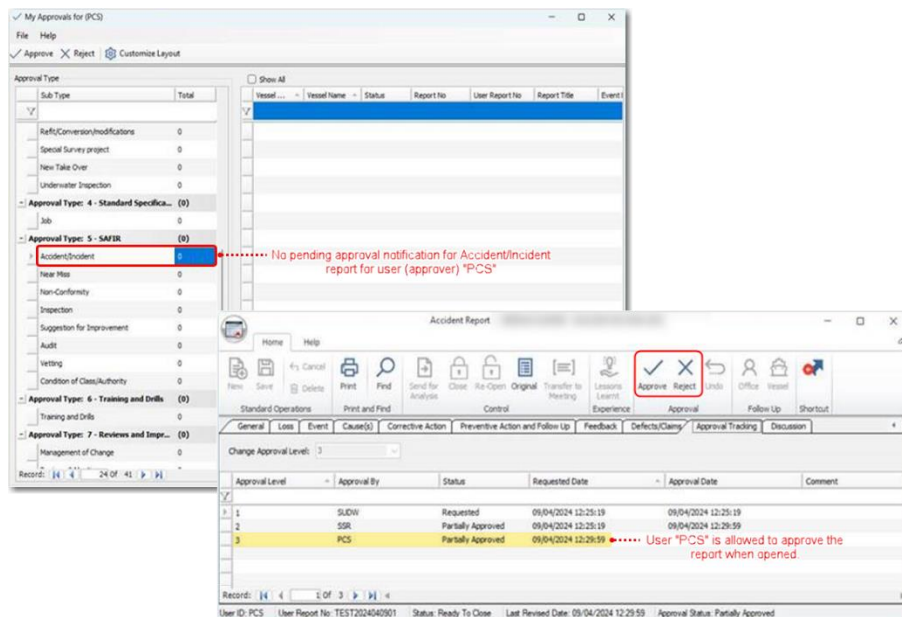
1. Home & Admin

- ❑ [81914] Resolved an issue on the **Fleet Compliance** screen where users were unable to open the Work & Rest Hours NC (Non-Compliance) record for certain vessels when double-clicking the flag icon.



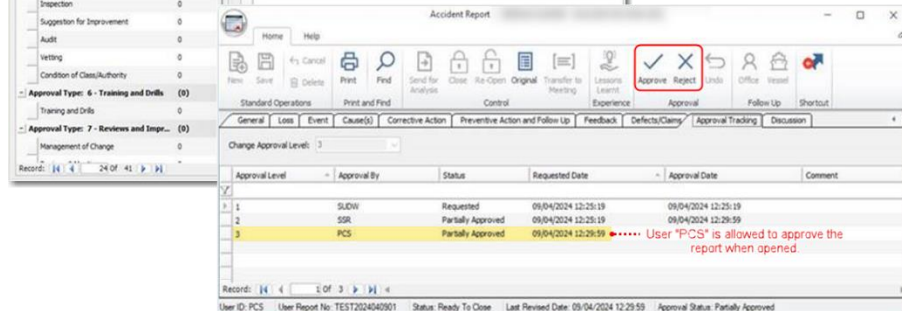
| Vessel Name | CMS Status (30 Days) | Certificate (30 Days) | Port State (30 Days) | Flag State (30 Days) | Work & Rest Hours NC (30 Days) | Settings (30 Days) | Undesired Events |
|-------------|----------------------|-----------------------|----------------------|----------------------|--------------------------------|--------------------|------------------|
| Vessel 1 | Compliant | Compliant | Compliant | Compliant | Compliant | Compliant | Compliant |
| Vessel 2 | Compliant | Compliant | Compliant | Compliant | Compliant | Compliant | Compliant |
| Vessel 3 | Compliant | Compliant | Compliant | Compliant | Compliant | Compliant | Compliant |
| Vessel 4 | Compliant | Compliant | Compliant | Compliant | Compliant | Compliant | Compliant |
| Vessel 5 | Compliant | Compliant | Compliant | Compliant | Compliant | Compliant | Compliant |
| Vessel 6 | Compliant | Compliant | Compliant | Compliant | Compliant | Compliant | Compliant |
| Vessel 7 | Compliant | Compliant | Compliant | Compliant | Compliant | Compliant | Compliant |
| Vessel 8 | Compliant | Compliant | Compliant | Compliant | Compliant | Compliant | Compliant |
| Vessel 9 | Compliant | Compliant | Compliant | Compliant | Compliant | Compliant | Compliant |
| Vessel 10 | Compliant | Compliant | Compliant | Compliant | Compliant | Compliant | Compliant |
| Vessel 11 | Compliant | Compliant | Compliant | Compliant | Compliant | Compliant | Compliant |
| Vessel 12 | Compliant | Compliant | Compliant | Compliant | Compliant | Compliant | Compliant |
| Vessel 13 | Compliant | Compliant | Compliant | Compliant | Compliant | Compliant | Compliant |
| Vessel 14 | Compliant | Compliant | Compliant | Compliant | Compliant | Compliant | Compliant |
| Vessel 15 | Compliant | Compliant | Compliant | Compliant | Compliant | Compliant | Compliant |
| Vessel 16 | Compliant | Compliant | Compliant | Compliant | Compliant | Compliant | Compliant |
| Vessel 17 | Compliant | Compliant | Compliant | Compliant | Compliant | Compliant | Compliant |
| Vessel 18 | Compliant | Compliant | Compliant | Compliant | Compliant | Compliant | Compliant |
| Vessel 19 | Compliant | Compliant | Compliant | Compliant | Compliant | Compliant | Compliant |
| Vessel 20 | Compliant | Compliant | Compliant | Compliant | Compliant | Compliant | Compliant |

- ❑ [81406] Resolved an issue where HSEQ-related reports that are 'Pending Approval' failed to appear on the **My Approvals** screen, which prevented users with Approver rights from identifying reports that require approval. However, they could still perform approval upon opening the specific report.



| Sub Type | Total |
|--|-------|
| Refit/Conversion/modifications | 0 |
| Special Survey project | 0 |
| New Take Over | 0 |
| Underwater Inspection | 0 |
| Approval Type: 4 - Standard Specifica... | (0) |
| Job | 0 |
| Approval Type: 5 - SAFDR | (0) |
| Accident/Incident | 1 |
| Near Miss | 0 |
| Non-Conformity | 0 |
| Inspection | 0 |
| Suggestion for Improvement | 0 |
| Audit | 0 |
| Vetting | 0 |
| Condition of Class/Authority | 0 |
| Approval Type: 6 - Training and Drills | (0) |
| Training and Drills | 0 |
| Approval Type: 7 - Reviews and Impe... | (0) |
| Management of Change | 0 |

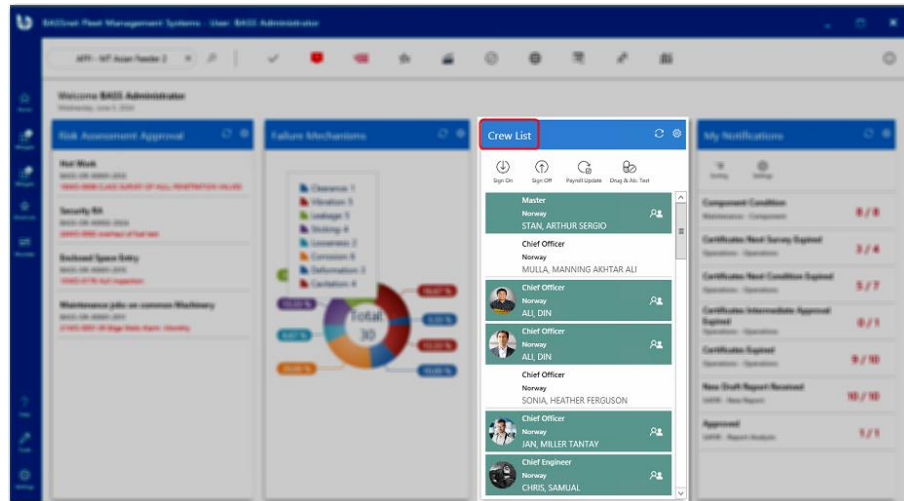
No pending approval notification for Accident/incident report for user (approver) 'PCS'



| Approval Level | Approval By | Status | Requested Date | Approval Date | Comment |
|----------------|-------------|--------------------|---------------------|---------------------|--|
| 1 | SUDW | Requested | 09/04/2024 12:25:19 | 09/04/2024 12:25:19 | |
| 2 | SRP | Partially Approved | 09/04/2024 12:25:19 | 09/04/2024 12:25:19 | |
| 3 | PCS | Partially Approved | 09/04/2024 12:26:59 | | User "PCS" is allowed to approve the report when opened. |

User ID: PCS User Report No: TEST2024040901 Status: Ready To Close Last Revised Date: 09/04/2024 12:29:59 Approval Status: Partially Approved

- ❑ [80892] Resolved the mismatch of crew data in the BASSnet **Crew List** widget, which did not tally with the data in HR Manager as expected.



2. Maintenance

- ❑ [81031] Resolved an issue where duplicate Scheduled Jobs were created when two or more users connected the same Equipment ID to different Standard Instruction records in **Equipment Setup** and then saved at the same time.

Home

Help

Back

Next

Print

Cancel

First

Previous

Next

End

Print

Print All

Print Range

Print Selection

Print Selection

Print Selection

Print Selection

Print Selection

Print Selection

Print Selection

Print Selection

Print Selection

Print Selection

Print Selection

Print Selection

Print Selection

Print Selection

Print Selection

Print Selection

Print Selection

Print Selection

Print Selection

Print Selection

Print Selection

Print Selection

Print Selection

Print Selection

Print Selection

Print Selection

Print Selection

Print Selection

Print Selection

Print Selection

Print Selection

Print Selection

Print Selection

Print Selection

Print Selection

Print Selection

Print Selection

Print Selection

Print Selection

Print Selection

Print Selection

Print Selection

Print Selection

Print Selection

Print Selection

Print Selection

Print Selection

Print Selection

Print Selection

Print Selection

Print Selection

Print Selection

Print Selection

Print Selection

Print Selection

Print Selection

Print Selection

Print Selection

Print Selection

Print Selection

Print Selection

Print Selection

Print Selection

Print Selection

Print Selection

Print Selection

Print Selection

Print Selection

Print Selection

Print Selection

Print Selection

Print Selection

Print Selection

Print Selection

Print Selection

Print Selection

Print Selection

Print Selection

Print Selection

Print Selection

Print Selection

Print Selection

Print Selection

Print Selection

Print Selection

Print Selection

Print Selection

Print Selection

Print Selection

Print Selection

Print Selection

Print Selection

Print Selection

Print Selection

Print Selection

Print Selection

Print Selection

Print Selection

Print Selection

Print Selection

Print Selection

Print Selection

Print Selection

Print Selection

Print Selection

Print Selection

Print Selection

Print Selection

Print Selection

Print Selection

Print Selection

Print Selection

Print Selection

Print Selection

Print Selection

Print Selection

Print Selection

Print Selection

Print Selection

Print Selection

Print Selection

Print Selection

Print Selection

Print Selection

Print Selection

Print Selection

Print Selection

Print Selection

Print Selection

Print Selection

Print Selection

Print Selection

Print Selection

Print Selection

Print Selection

Print Selection

Print Selection

Print Selection

Print Selection

Print Selection

Print Selection

Print Selection

Print Selection

Print Selection

Print Selection

Print Selection

Print Selection

Print Selection

Print Selection

Print Selection

Print Selection

Print Selection

Print Selection

Print Selection

Print Selection

Print Selection

Print Selection

Print Selection

Print Selection

Print Selection

Print Selection

Print Selection

Print Selection

Print Selection

Print Selection

Print Selection

Print Selection

Print Selection

Print Selection

Print Selection

Print Selection

Print Selection

Print Selection

Print Selection

Print Selection

Print Selection

Print Selection

Print Selection

Print Selection

Print Selection

Print Selection

Print Selection

Print Selection

Print Selection

Print Selection

Print Selection

Print Selection

Print Selection

Print Selection

Print Selection

Print Selection

Print Selection

Print Selection

Print Selection

Print Selection

Print Selection

Print Selection

Print Selection

Print Selection

Print Selection

Print Selection

Print Selection

Print Selection

Print Selection

Print Selection

Print Selection

Print Selection

Print Selection

Print Selection

Print Selection

Print Selection

Print Selection

Print Selection

Print Selection

Print Selection

Print Selection

Print Selection

Print Selection

Print Selection

Print Selection

Print Selection

Print Selection

Print Selection

Print Selection

Print Selection

Print Selection

Print Selection

Print Selection

Print Selection

Print Selection

Print Selection

Print Selection

Print Selection

Print Selection

Print Selection

Print Selection

Print Selection

Print Selection

Print Selection

Print Selection

Print Selection

Print Selection

Print Selection

Print Selection

Print Selection

Print Selection

Print Selection

Print Selection

Print Selection

Print Selection

Print Selection

Print Selection

Print Selection

Print Selection

Print Selection

Print Selection

Print Selection

Print Selection

Print Selection

Print Selection

Print Selection

Print Selection

Print Selection

Print Selection

Print Selection

Print Selection

Print Selection

Print Selection

Print Selection

Print Selection

Print Selection

Print Selection

Print Selection

Print Selection

Print Selection

Print Selection

Print Selection

Print Selection

Print Selection

Print Selection

Print Selection

Print Selection

Print Selection

Print Selection

Print Selection

Print Selection

Print Selection

Print Selection

Print Selection

Print Selection

Print Selection

Print Selection

Print Selection

Print Selection

Print Selection

Print Selection

Print Selection

Print Selection

Print Selection

Print Selection

Print Selection

Print Selection

Print Selection

Print Selection

Print Selection

Print Selection

Print Selection

Print Selection

Print Selection

Print Selection

Print Selection

Print Selection

Print Selection

Print Selection

Print Selection

Print Selection

Print Selection

Print Selection

Print Selection

Print Selection

Print Selection

Print Selection

Print Selection

Print Selection

Print Selection

Print Selection

Print Selection

Print Selection

Print Selection

Print Selection

Print Selection

Print Selection

Print Selection

Print Selection

Print Selection

Print Selection

Print Selection

Print Selection

Print Selection

Print Selection

Print Selection

Print Selection

Print Selection

Print Selection

Print Selection

Print Selection

Print Selection

Print Selection

Print Selection

Print Selection

Print Selection

Print Selection

Print Selection

Print Selection

Print Selection

Print Selection

Print Selection

Print Selection

Print Selection

Print Selection

Print Selection

Print Selection

Print Selection

Print Selection

Print Selection

Print Selection

Print Selection

Print Selection

Print Selection

Print Selection

Print Selection

Print Selection

Print Selection

Print Selection

Print Selection

Print Selection

Print Selection

Print Selection

Print Selection

Print Selection

Print Selection

Print Selection

Print Selection

Print Selection

Print Selection

Print Selection

Print Selection

Print Selection

Print Selection

Print Selection

Print Selection

Print Selection

Print Selection

Print Selection

Print Selection

Print Selection

Print Selection

Print Selection

Print Selection

Print Selection

Print Selection

Print Selection

Print Selection

Print Selection

Print Selection

Print Selection

Print Selection

Print Selection

Print Selection

Print Selection

Print Selection

Print Selection

Print Selection

Print Selection

Print Selection

Print Selection

Print Selection

Print Selection

Print Selection

Print Selection

Print Selection

Print Selection

Print Selection

Print Selection

Print Selection

Print Selection

Print Selection

Print Selection

Print Selection

Print Selection

Print Selection

Print Selection

Print Selection

Print Selection

Print Selection

Print Selection

Print Selection

Print Selection

Print Selection

Print Selection

Print Selection

Print Selection

Print Selection

Print Selection

Print Selection

Print Selection

Print Selection

Print Selection

Print Selection

Print Selection

Print Selection

Print Selection

Print Selection

Print Selection

Print Selection

Print Selection

Print Selection

Print Selection

Print Selection

Print Selection

Print Selection

Print Selection

Print Selection

Print Selection

Print Selection

Print Selection

Print Selection

Print Selection

Print Selection

Print Selection

Print Selection


Print Selection

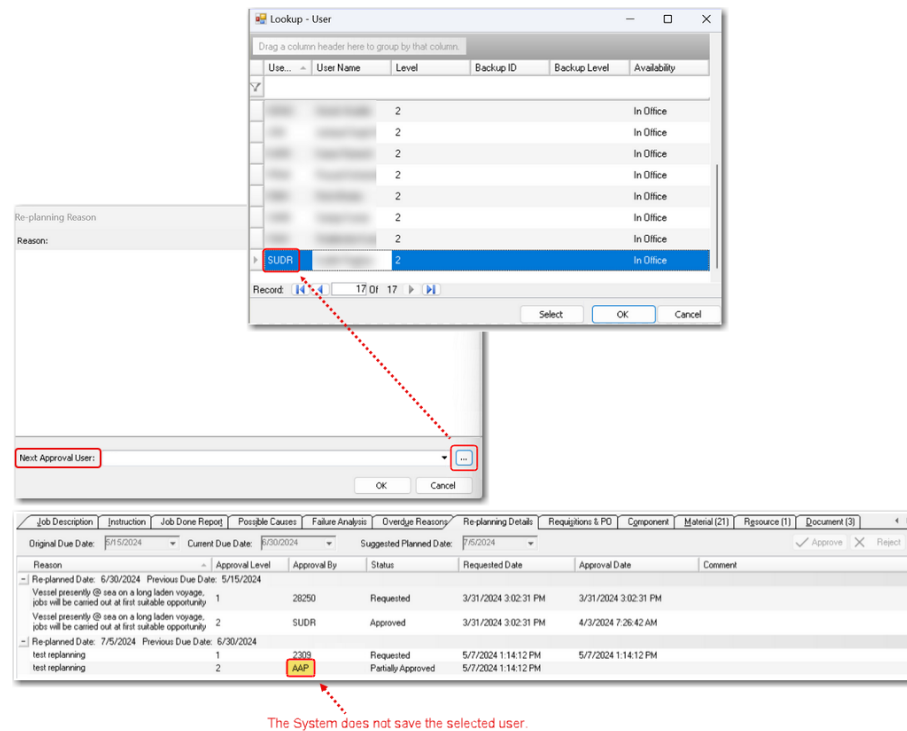
Print Selection


Print Selection

Print Selection

Print Selection

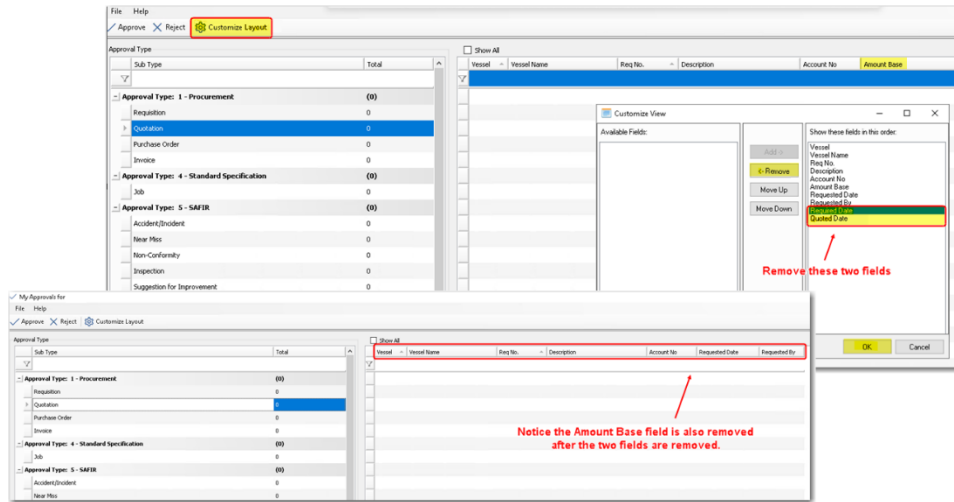
- ❑ [81562] Resolved an issue when replanning Job Orders where if the user selected the next Approver (other than the default Approver) using the three-dot ellipsis button , the System failed to save the selected Approver and instead saved another user.



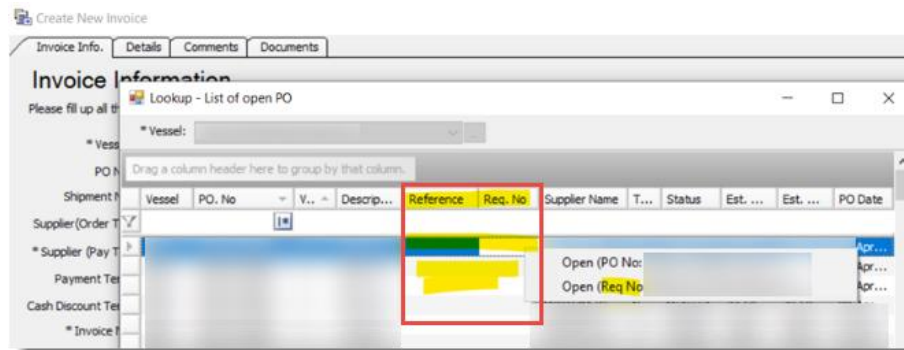
- ❑ [81367] Resolved the following issues when using the **Shift Multiple Jobs to History** function:
 - The **Documents** tab and all connected documents were not displayed on the **Shift Multiple Jobs to History** screen.
 - Postponed Job Orders that were shifted to history did not show the 'Postponed' indicator  on the **Job History 'Find'** grid.

3. Procurement

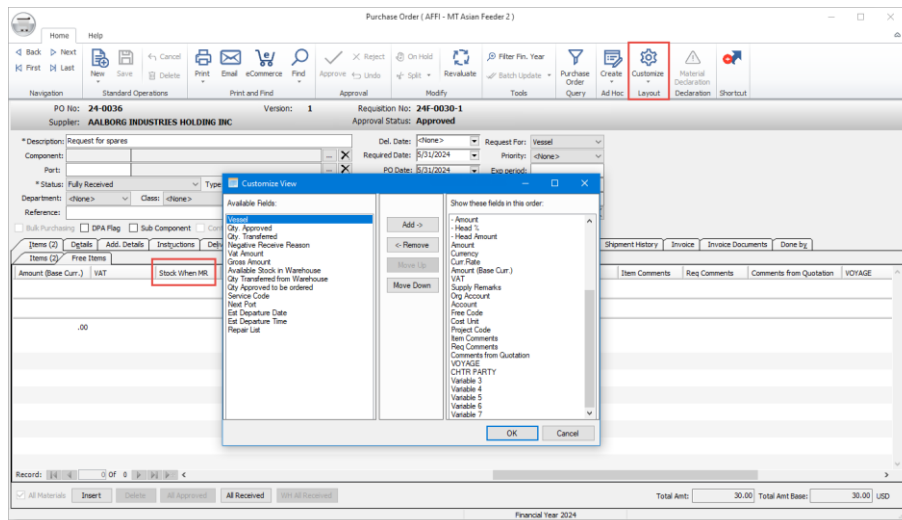
- ❑ [81828] Resolved an issue on the **My Approvals** screen where certain essential fields were removed unexpectedly when using the **Customize Layout** function to remove unwanted fields.



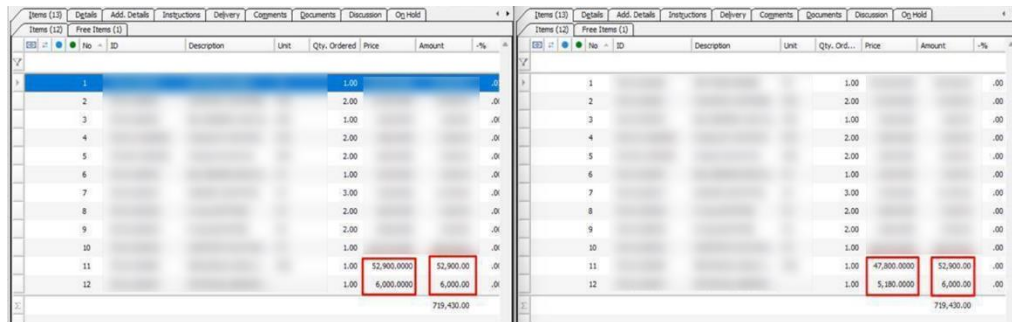
- ❑ [81830] Resolved an issue where bulk requisition items with **Comments** in **Supplier Quotation** appear duplicated in the generated Purchase Order report.
- ❑ [81891] Resolved an issue where the **Reference** and **Req. No** columns on the **List of open PO** lookup screen (via **Create New Invoice** screen) were not displaying any information.



- ❑ [81642] Resolved an issue where the **Stock When MR** column was missing on the **Purchase Order – Customize View** screen (for free items).

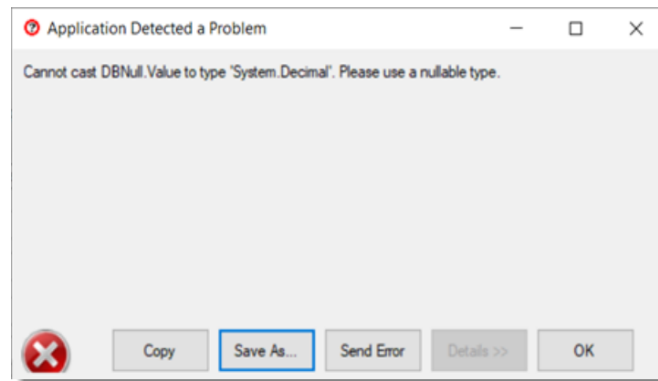


- ❑ [81833] Improved system performance when opening Purchase Order records that contain a large number of items created before version 2.11.
- ❑ [81632] Resolved an issue on the **Purchase Order** screen where the **Amount** for line items did not change even though the Price was updated to reflect a price change on the **Material** screen – **Supplier** tab. This issue only occurred for new Purchase Orders that were created using **Create As** from a record where at least one material has a different price setup on the **Material** screen – **Supplier** tab.

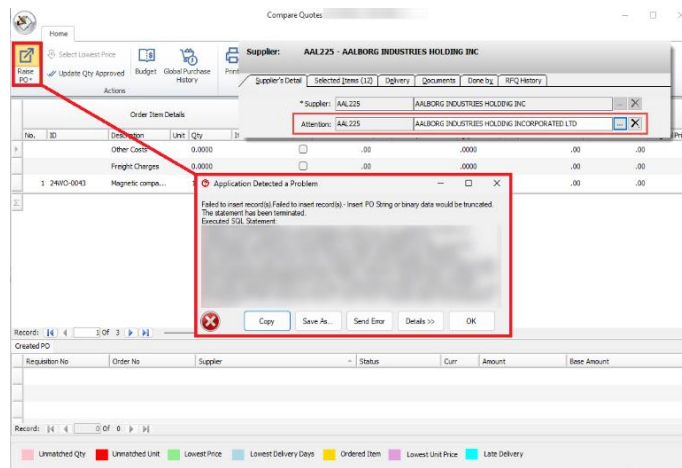


| ID | Description | Unit | Qty. Ordered | Price | Amount | %g |
|----|-------------|------|--------------|--------------|------------|-----|
| 1 | | | 1.00 | | | .00 |
| 2 | | | 2.00 | | | .00 |
| 3 | | | 1.00 | | | .00 |
| 4 | | | 2.00 | | | .00 |
| 5 | | | 2.00 | | | .00 |
| 6 | | | 1.00 | | | .00 |
| 7 | | | 3.00 | | | .00 |
| 8 | | | 2.00 | | | .00 |
| 9 | | | 2.00 | | | .00 |
| 10 | | | 1.00 | | | .00 |
| 11 | | | 1.00 | \$2,900.0000 | \$2,900.00 | .00 |
| 12 | | | 1.00 | 6,000.0000 | 6,000.00 | .00 |
| | | | | | 719,430.00 | |

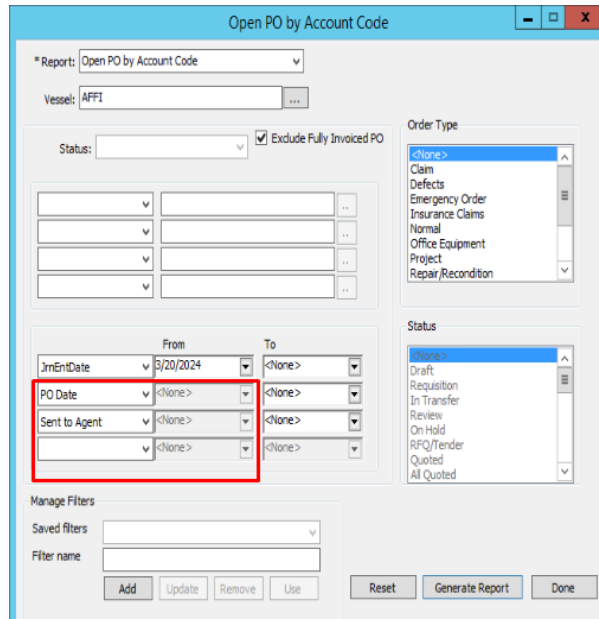
- ❑ [81832] Resolved an issue where the materials' Component ID was missing when Material Transaction was performed using BASSnet Procurement (i.e. updating PO to Fully Received).
- ❑ [81430] Fixed an error that appeared when updating a Supplier Quotation for a split requisition that consisted of at least one unselected quotation item.



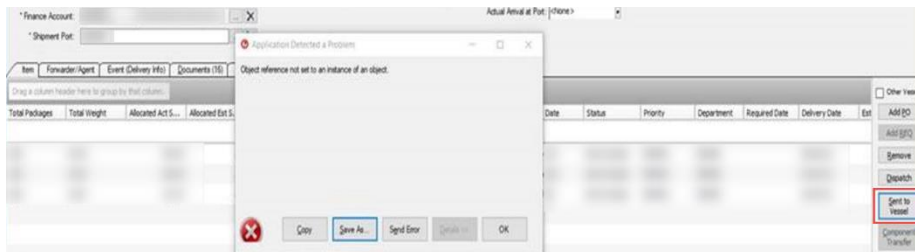
- ❑ [81640] Resolved an issue on the **Compare Quotes** screen where the **Unit Price** and **Amount Base** columns were not updated after adding a new item in the requisition and quoting it directly on the **Supplier Quotation** screen when the requisition status was RFQ or later.
- ❑ [81829] Fixed an error that appeared when clicking the **Raise PO** button for a supplier quotation where the **Attention** field input exceeded 40 characters.



- ❑ [81108] Resolved an issue on the **Open PO by Account Code** report generation screen where the **From** fields were incorrectly disabled for subsequent fields.

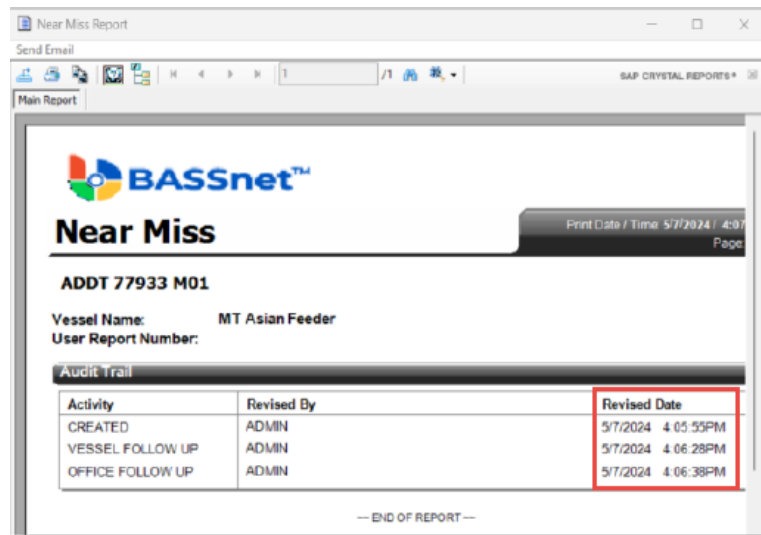


- ❑ [81286] Resolved an issue where On Hold Requisitions/POs/Invoices were not automatically activated after the **On Hold Until** date had passed.
- ❑ [81831] Fixed an error that appeared when clicking **Sent to Vessel** on the **Shipment** screen – **Items** tab.



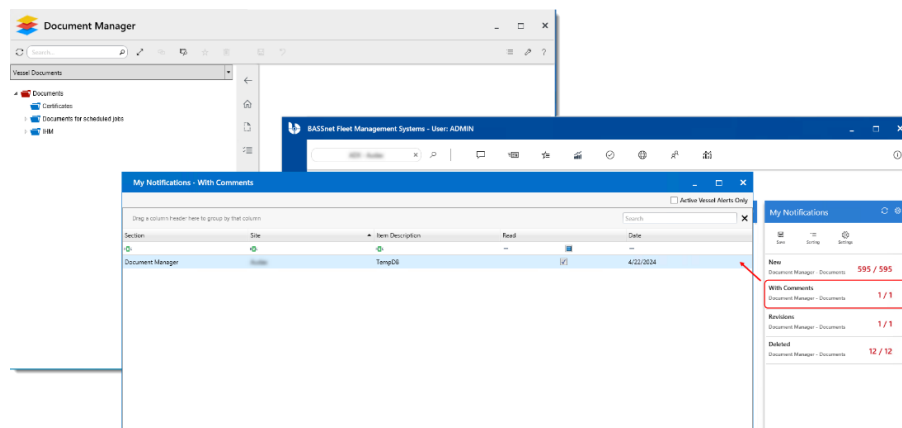
4. SAFIR

- ❑ [80075] Resolved an issue where Audit Trail for SAFIR reports were displaying the Created Date as the Revised Date.

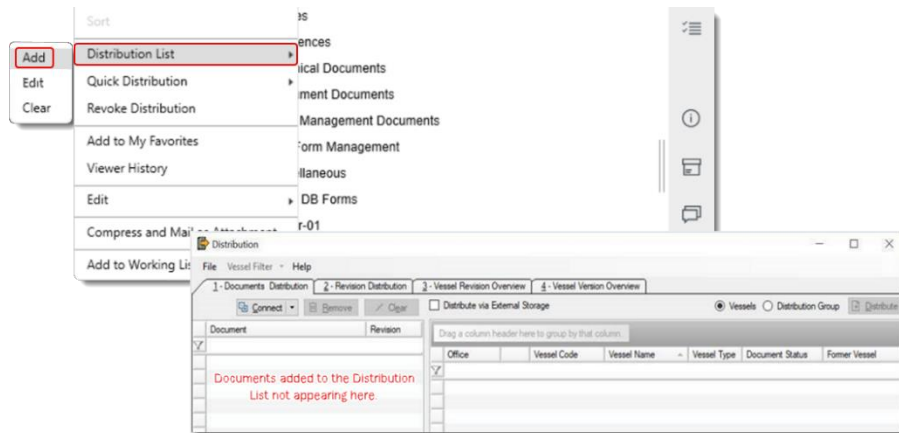


5. Document Manager

- ❑ [81407] Resolved failure to open documents when double-clicked from the Document Manager notification in the **My Notifications** widget.



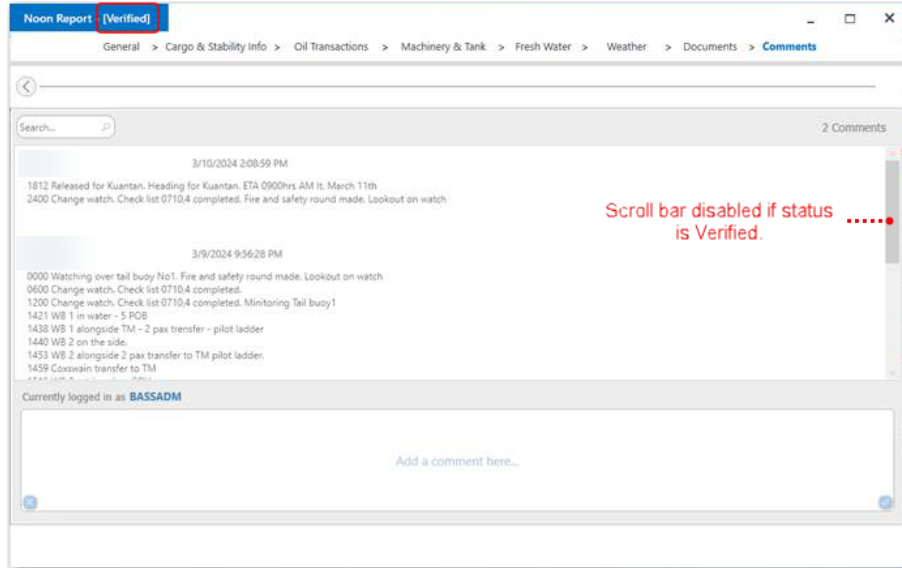
- ❑ [81850] Resolved an issue where documents added to the Distribution List did not immediately appear as expected under the **Distribution** screen – **Document Distribution** tab, resulting in users having to close and reopen the Distribution window to see the updated list.



- ❑ [80934] Resolved failure to replicate attached documents between the Office and Vessel due to the documents having Microsoft Windows reserved words in their file names.

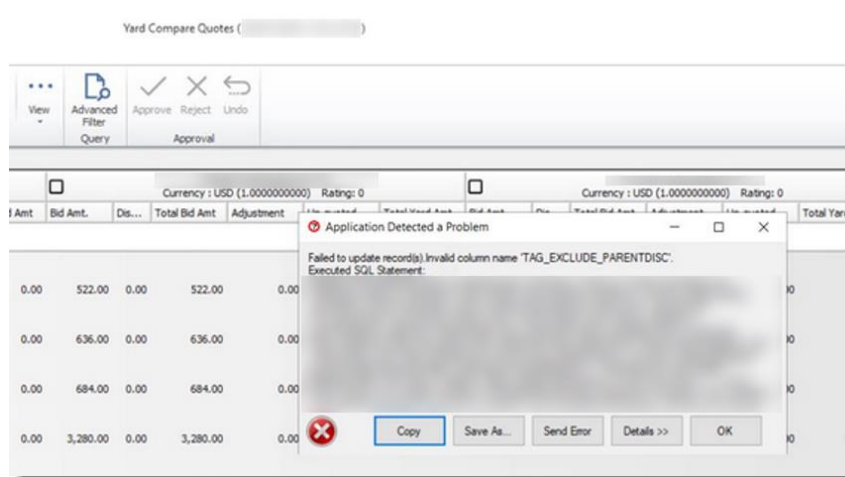
6. Operations

- ❑ [81094] Fixed a bug that prevented scrolling and viewing of full comments under the **Comments** tab for verified Ship Log events.



7. Projects

- ❑ [81311] Fixed an error that appeared when updating the **Adjustment** or **Unquoted** amount for unquoted Supplementary or Extra tasks on the **Yard Compare Quotes** screen – **Yard Details** tab (before updating it on the **Quotation** screen – **Selected Items** tab).



---End of Document---