



## BASSnet 2.11 SP2 Hotfix 2-070 Patch Release Notes

### Product Release Information

<b>Product:</b>	BASSnet™ 2.11 SP2
<b>Release Number:</b>	BN2.11 SP2 HF2-070
<b>Release Date:</b>	15 Aug 2024
<b>Customer Support:</b>	For more information or support, please visit our website <a href="http://www.bassnet.no/">http://www.bassnet.no/</a>

### This release addresses the following issues:

This release note describes the new enhancements and system corrections (as reported by Customers), if any, made in BASSnet 2.11 SP2 carried out in the Hotfix 2-070 patch released on 15<sup>th</sup> Aug 2024.

## Table of Contents

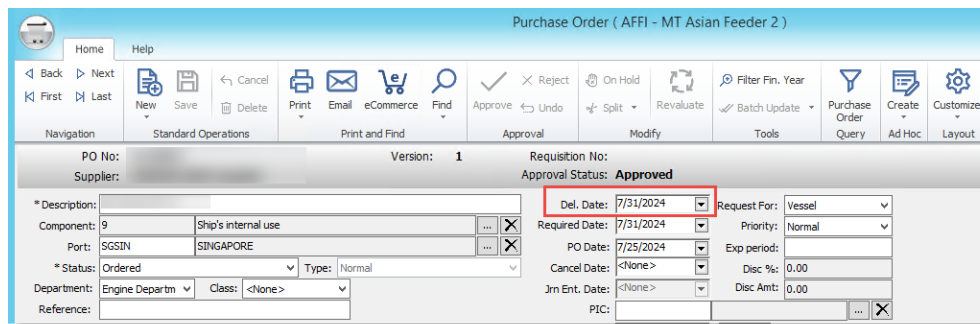
<b>Enhancements .....</b>	<b>2</b>
1. Procurement.....	2
<b>Fixes .....</b>	<b>3</b>
1. Home & Administration.....	3
2. Fleet Management .....	3
3. Maintenance.....	3
4. Procurement.....	5
5. Document Manager.....	9
6. Projects.....	10

## Enhancements

### 1. Procurement

- ❑ [CR 15339] The **Delivery Date** on the **Purchase Order** screen can now be updated for invoiced Purchase Orders.

**Note:** Changing the delivery date of an invoiced PO will not affect the PO Journal Entry Date, and will not reverse or regenerate the PO estimates.



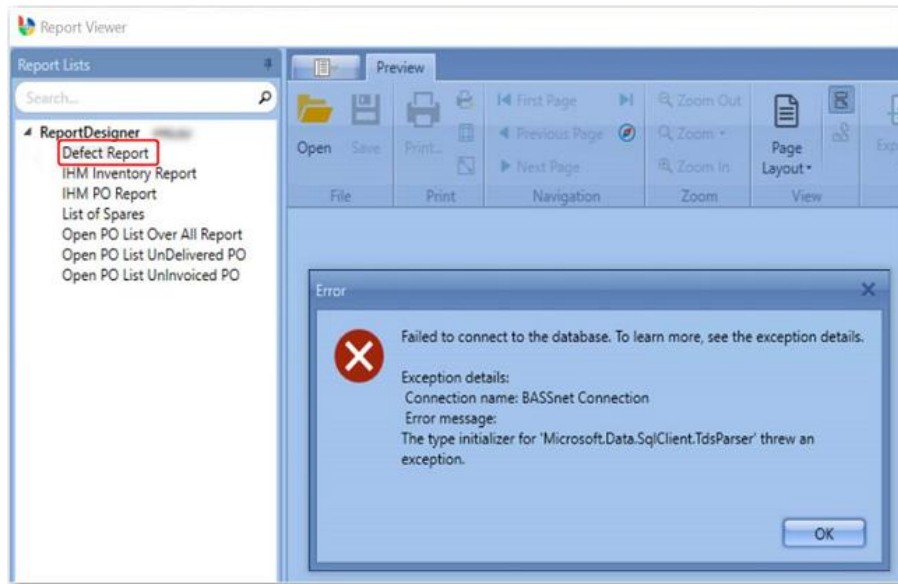
The screenshot shows the 'Purchase Order (AFFI - MT Asian Feeder 2)' interface. The 'Del. Date' field is highlighted with a red box, indicating it can now be updated for invoiced POs. The 'Approval Status' is 'Approved'.

Field	Value
PO No:	[Redacted]
Version:	1
Requestion No:	[Redacted]
Approval Status:	Approved
Supplier:	[Redacted]
* Description:	[Redacted]
Component:	9 Ship's internal use
Port:	SGSIN SINGAPORE
* Status:	Ordered
Type:	Normal
Department:	Engine Departm
Class:	<None>
Reference:	[Redacted]
Del. Date:	7/31/2024
Request For:	Vessel
Required Date:	7/31/2024
Priority:	Normal
PO Date:	7/25/2024
Exp period:	[Redacted]
Cancel Date:	<None>
Disc %:	0.00
Jrn Ent. Date:	<None>
Disc Amt:	0.00
PIC:	[Redacted]

## Fixes

### 1. Home & Administration

- ❑ [81768] Fixed a connection error that returned when opening a report in **Report Viewer**, even though the system had a valid connection to the database.

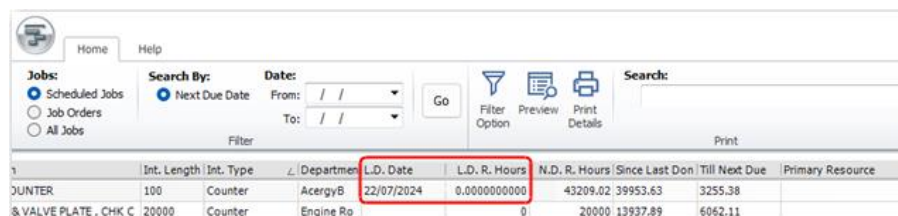


### 2. Fleet Management

- ❑ [82297] Improved system performance when creating a new component on the **Component Group** screen.

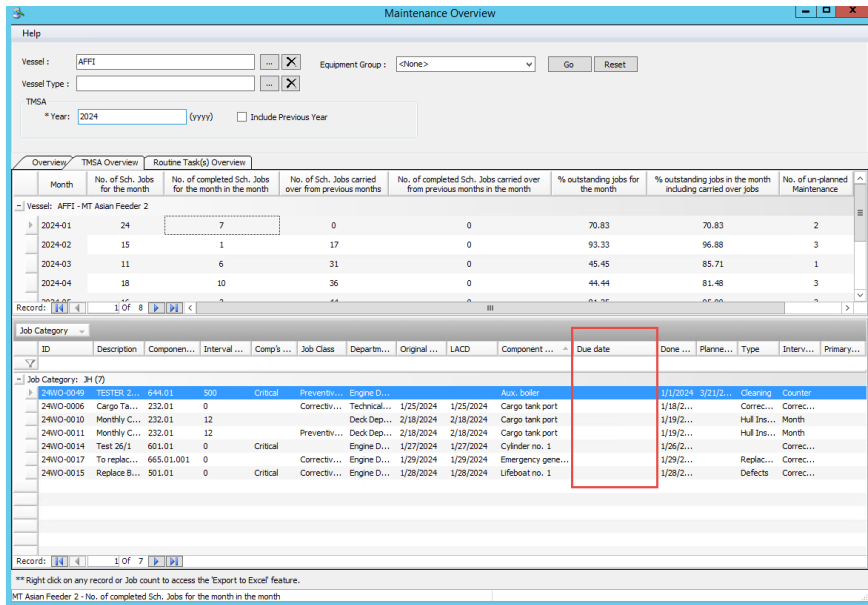
### 3. Maintenance

- ❑ [82405] Resolved an issue when users created Job Orders from Scheduled Jobs where after creating the Job Order, the Scheduled Job's **Last Done Running Hours** became 0 and **Last Done Date** changed to the day the Job Order was created, as could be seen on the **Maintenance Planner** page for the job.



Jobs	Int. Length	Int. Type	Department	L.D. Date	L.D. R. Hours	N.D. R. Hours	Since Last Don	Till Next Due	Primary Resource
DUNTER	100	Counter	AcergyB	22/07/2024	0.0000000000	43209.02	39953.63	3255.38	
& VALVE PLATE, CHK C	20000	Counter	Engine Re		0	20000	13937.89	6062.11	

- ❑ [82351] Resolved an issue on the **Component** screen where the record was not saved after linking an equipment to a component and clicking **Save** the first time.
- ❑ [81864] Resolved an issue on the **Standard Instructions** screen where the Scheduled Job's **Next Due Date** column was not updated correctly after using Batch Update to update the job interval.
- ❑ [82264] Resolved an issue on the **Maintenance Overview** screen – **TMSA Overview** tab where the **Due Date** column was not displaying any information.

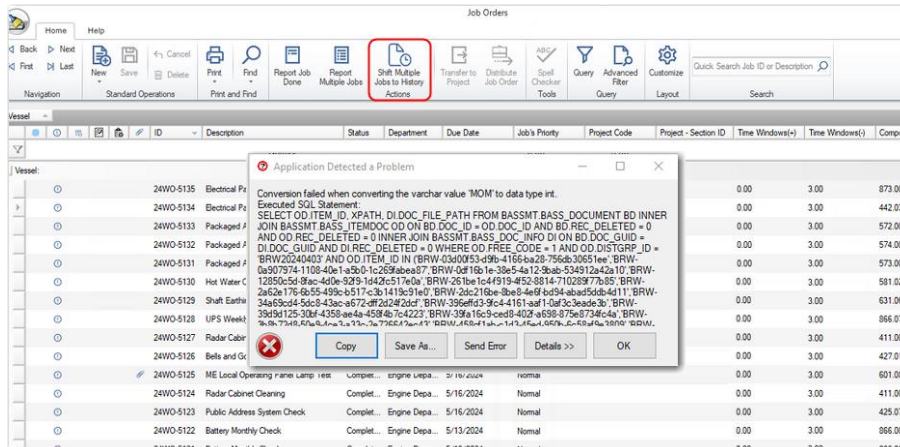


Month	No. of Sch. Jobs for the month	No. of completed Sch. Jobs for the month in the month	No. of Sch. Jobs carried over from previous months	No. of completed Sch. Jobs carried over from previous months in the month	% outstanding jobs for the month	% outstanding jobs in the month including carried over jobs	No. of un-planned Maintenance
2024-01	24	7	0	0	70.83	70.83	2
2024-02	15	1	17	0	93.33	96.88	3
2024-03	11	6	31	0	45.45	85.71	1
2024-04	18	10	36	0	44.44	81.48	3

ID	Description	Component	Interval	Comp's...	Job Class	Departm...	Original...	LACD	Component...	Due date	Done...	Planne...	Type	Inter...	Primary...
24WO-0099	TESTER 2...	644.01	500	Critical	Preventiv...	Engine D...			Aux. Boiler	1/1/2024	3/21/2...		Cleaning	Counter	
24WO-0006	Cargo Tank...	232.01	0		Correctiv...	Technical...	1/25/2024	1/25/2024	Cargo tank port	1/19/2...			Correc...	Correc...	
24WO-0010	Monthly C...	232.01	12		Preventiv...	Deck Dep...	2/18/2024	2/18/2024	Cargo tank port	1/19/2...			Hull Ins...	Month	
24WO-0011	Monthly C...	232.01	12		Preventiv...	Deck Dep...	2/18/2024	2/18/2024	Cargo tank port	1/19/2...			Hull Ins...	Month	
24WO-0014	Test 26/1	601.01	0	Critical	Engine D...	1/27/2024	1/27/2024		Cylinder no. 1	1/26/2...			Correc...	Correc...	
24WO-0017	To replac...	665.01.001	0		Correctiv...	Engine D...	1/29/2024	1/29/2024	Emergency gene...	1/29/2...			Replac...	Correc...	
24WO-0015	Replace B...	501.01	0	Critical	Correctiv...	Engine D...	1/28/2024	1/28/2024	Lifeboat no. 1	1/28/2...			Defects	Correc...	

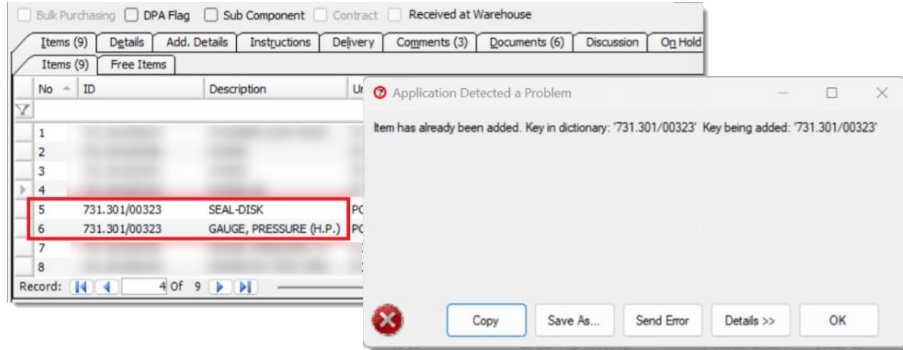
- ❑ [81823] Fixed an error that appeared after clicking **Shift Multiple Jobs to History** on the **Job Orders – Find** screen.



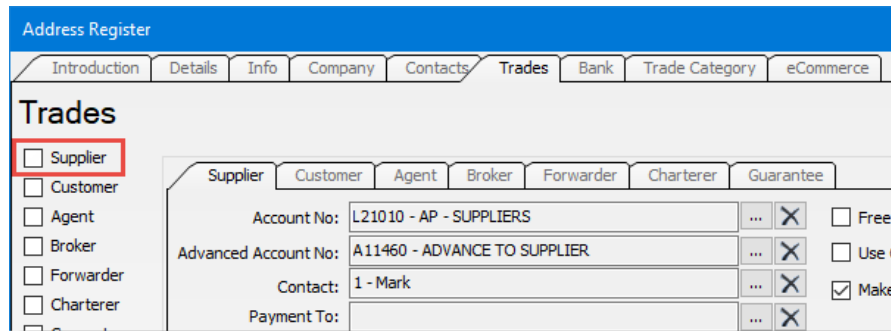
ID	Description	Status	Department	Due Date	Job's Priority	Project Code	Project - Section ID	Time Windows(1)	Time Windows(2)	Compor
24WO-5135	Electrical Pa...							0.00	3.00	873.001
24WO-5134	Electrical Pa...							0.00	3.00	442.038
24WO-5133	Packaged P...							0.00	3.00	572.002
24WO-5132	Packaged P...							0.00	3.00	574.003
24WO-5131	Packaged P...							0.00	3.00	573.002
24WO-5130	Hot Water C...							0.00	3.00	581.021
24WO-5129	Shaft Earthi...							0.00	3.00	631.061
24WO-5128	UPS Weekl...							0.00	3.00	866.076
24WO-5127	Radar Cabr...							0.00	3.00	411.001
24WO-5126	Bells and Gr...							0.00	3.00	427.012
24WO-5125	ME Local Oper...	Comple...	Engine Depa...	5/16/2024	Normal			0.00	3.00	601.084
24WO-5124	Radar Cabinet Cleaning	Comple...	Engine Depa...	5/16/2024	Normal			0.00	3.00	411.001
24WO-5123	Public Address System Check	Comple...	Engine Depa...	5/16/2024	Normal			0.00	3.00	425.071
24WO-5122	Battery Monthly Check	Comple...	Engine Depa...	5/13/2024	Normal			0.00	3.00	866.001

#### 4. Procurement

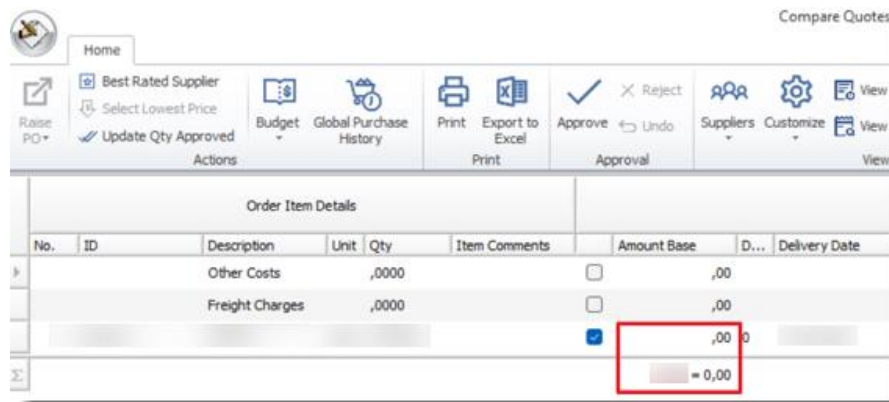
- ❑ [82478] Fixed an error that appeared when saving a Purchase Order that contains multiple materials with the same Material ID.



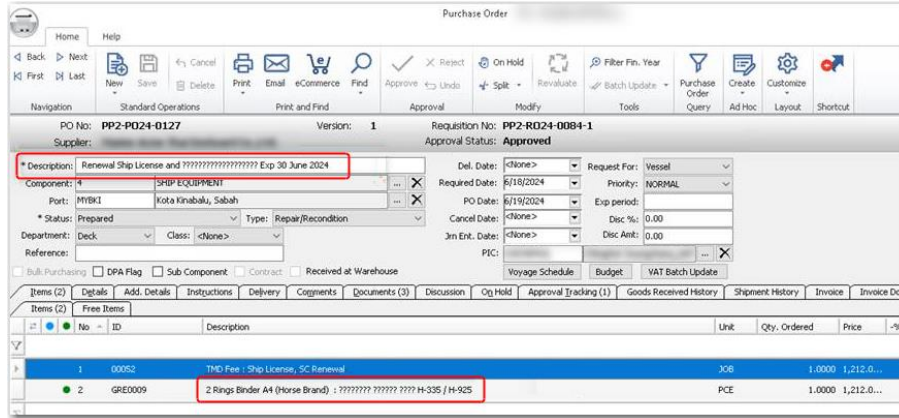
- ❑ [82557] Resolved an issue where the user was able to clear the **Supplier** check box under the **Address Register – Trades** tab without any system validation.



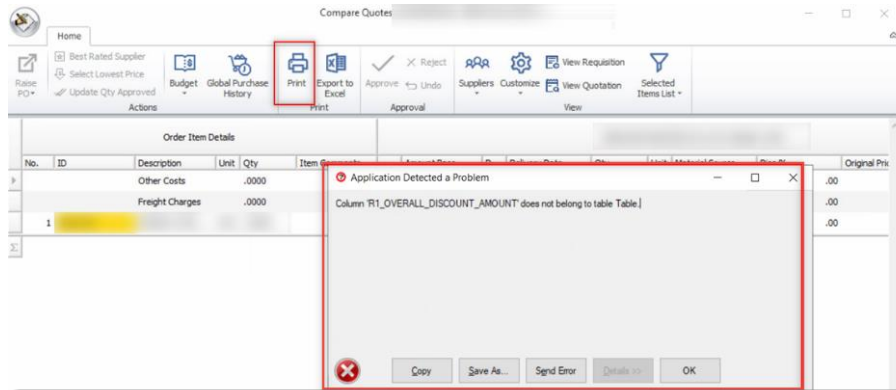
- ❑ [82549] Resolved an issue on the **Compare Quotes** screen where the **Amount Base** column was not updated correctly after the user undid the approval and edited the quantity on the **Update Qty Approved** screen (using **Ok – with updates** option). This issue only occurred for records created in BN2.10SP1.



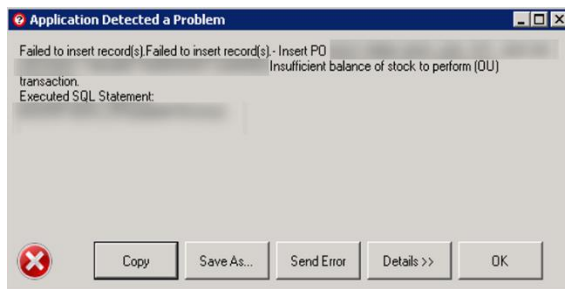
- ❑ [82548] Resolved an issue where foreign language characters in the Requisition's Description and Items Description did not display correctly in the Purchase Order that was raised from the requisition.



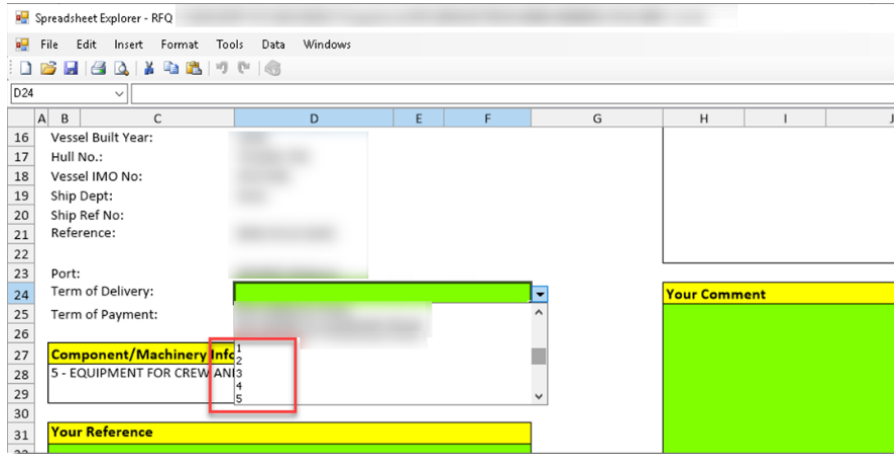
- ❑ [82547] Fixed an error that appeared after clicking **Print** on the **Compare Quotes** screen.



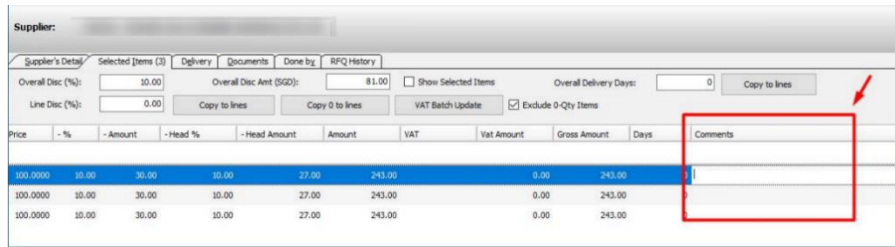
- ❑ [82543] Fixed an error that appeared after updating the quantity for a Services item in the **Supplier Quotation** for a repair/recondition requisition.



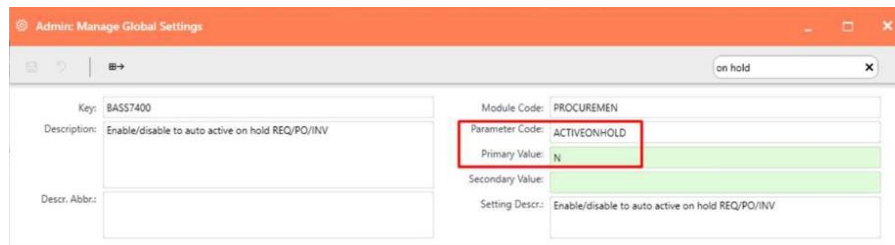
- ❑ [82540] Resolved an issue where the **Terms of Delivery** were not displayed as expected SupplierLink Excel file (generated from **Supplier Quotation - Print**) when there were more than 43 Delivery Terms in the register.



- ❑ [82546] Resolved an issue with the **Open PO by Account Code** and **Open PO by PO No.** reports where the Amount and Base Amount were incorrectly calculated.
- ❑ [82556] Resolved an issue on the **Supplier Quotation** screen where the system did not save the **Comments** entered under the **Selected Items** tab. This issue only occurred for bulk requisitions.



- ❑ [82553] Resolved an issue where the system automatically reactivated On Hold requisition records even though the ACTIVEONHOLD configuration was disabled.

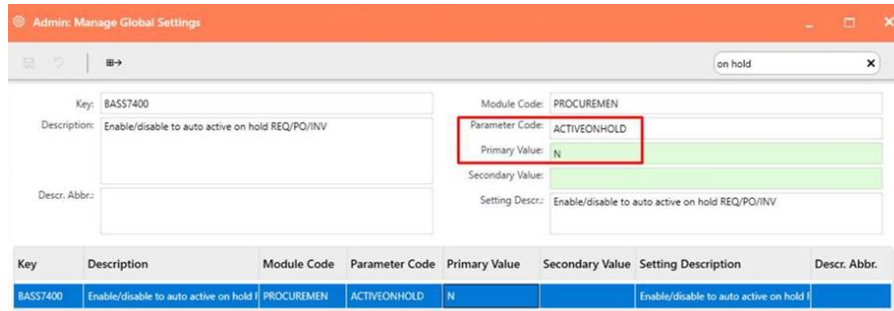


In addition, the system displayed the incorrect **Activated By** user after the On Hold record was automatically reactivated (Activated By should be 'BP' to indicate automatic reactivation by the system).

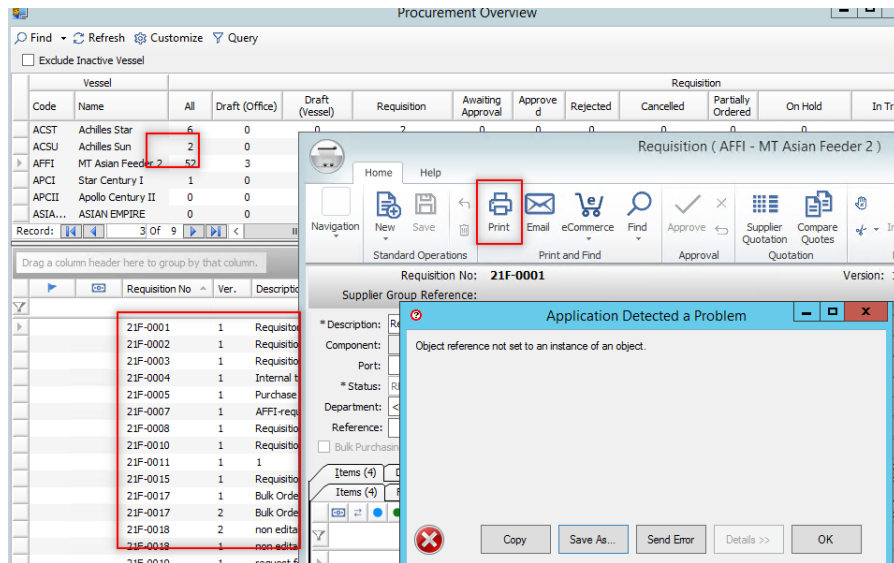




- ❑ [82545] Resolved an issue when raising a Purchase Order where the system incorrectly used the currency rate set in the Currency Rate register instead of the currency rate set in the quotation header. This issue only occurred if the user changes the currency rate after creating the quotation.
- ❑ [82552] Resolved an issue where the system automatically reactivated transactions that were on hold even though the ACTIVEONHOLD configuration was disabled.

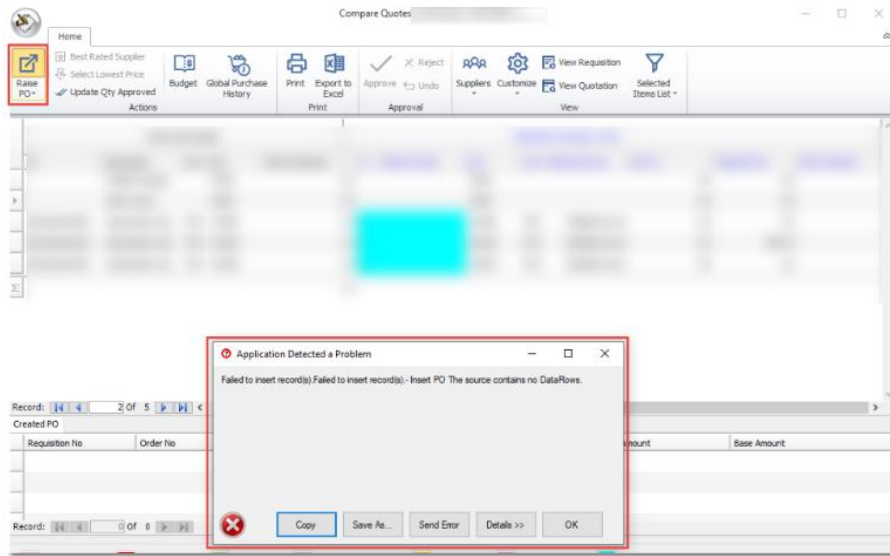


- ❑ [82551] Resolved an issue where the system was unable to send RFQ attachments to ShipServ when the documents were added on the **Requisition** screen – **Documents** tab using the **Connect** option from the Vessel site and then replicated to the Office site.
- ❑ [82526] Fixed an error that appeared when printing **Requisition** records that were opened from the **Procurement Overview** screen.



- ❑ [82542] Fixed an error that appeared when raising a Purchase Order from a bulk requisition created with the BULKPURCHASINGEXCEL configuration enabled.

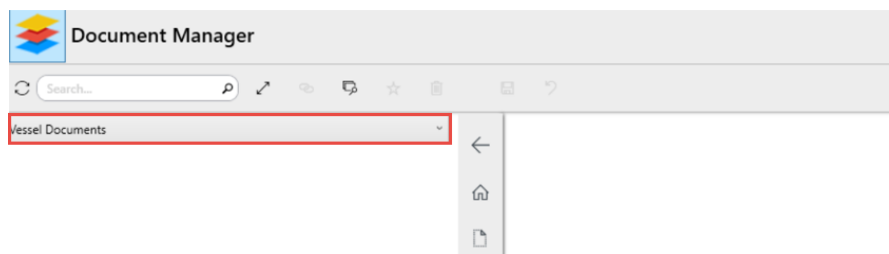




- ❑ [82554] Added support for Thai characters when importing quotation via SupplierLink. This resolved an issue where Thai characters in supplier quotations appeared as '???' when imported via SupplierLink. The following fields were affected:
  - Reference
  - Terms of Payment
  - Header Comment
  - Line Comment
  
- ❑ [82550] Resolved an issue where the system displayed the incorrect **Terms of Delivery** on the **Supplier Quotation** screen after importing a quotation via SupplierLink.

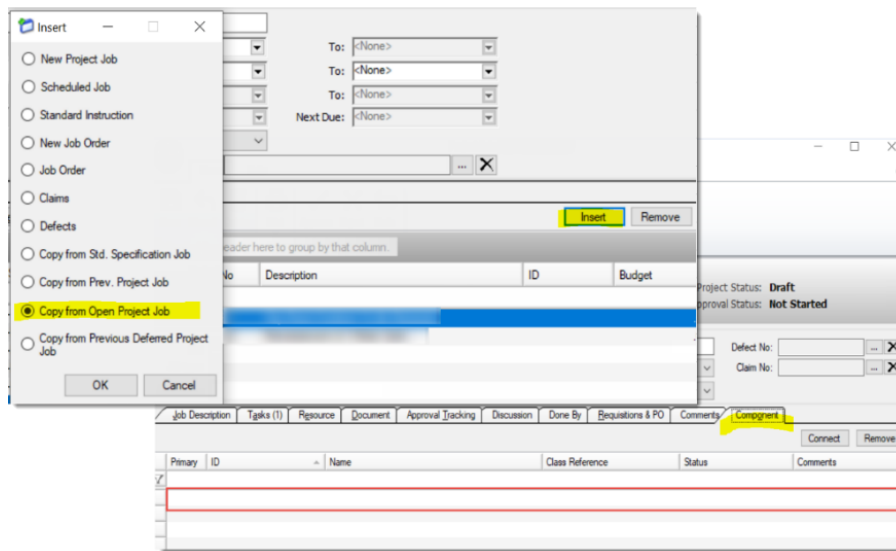
## 5. Document Manager

- ❑ [82156] Resolved an issue where distributed documents that have been revoked from the office can still be accessed by vessel users.
  
- ❑ [79026] Resolved an issue where the system did not automatically generate a default root folder for a newly created vessel in **Document Manager – Vessel Documents**.

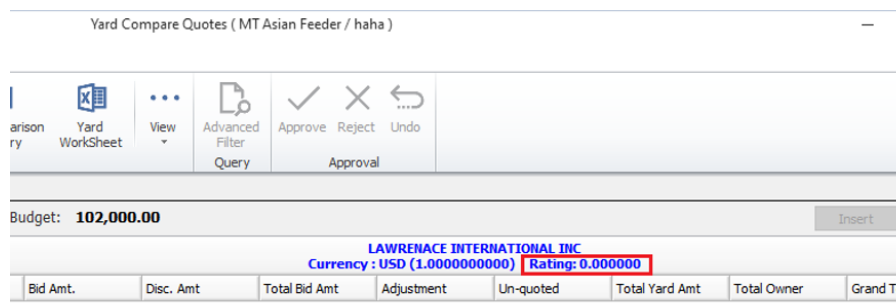


## 6. Projects

- ❑ [82461] Resolved an issue where the RFQ Excel Template was not correctly populated and included duplicate jobs after the User selected additional lines to be added in the RFQ Excel Template.
- ❑ [80973] Resolved an issue when copying a Project Job from another vessel (using the **Copy from Open Project Job** option) where the system incorrectly copied over linked components as well, causing the vessel component ID to be incorrect and the component was not displayed in the **Project Job** screen – **Component** tab.



- ❑ [81313] Resolved an issue where the average **Rating** of the yard evaluation was not correctly displayed on the **Yard Compare Quotes** screen.



---End of Document---